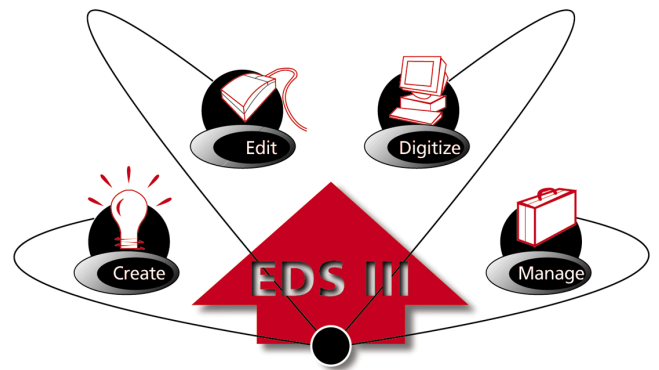


User manual for EDS III basic embroidery design software



- Designed for use with Microsoft® Windows® 95 or Windows® 3.x
- Complete lettering and monogramming features
- Extensive features for the control and management of embroidery workflow

Part number 110355-01 Revision A

Melco 
Embroidery Systems

A Saurer Group Company

1575 West 124th Avenue
Denver, Colorado 80234
United States of America
E-mail: publications@melco.com

© Copyright 1997 by Melco Embroidery Systems

ALL RIGHTS RESERVED No part of this publication may be reproduced, stored in a retrieval system, or transmitted in any form or by any means (electronic, mechanical, photocopying, recording, or otherwise) without prior written approval of Melco Embroidery Systems. Melco reserves the right to revise this publication and to make changes in it at any time without obligation of Melco to notify any person or organization of such revisions or changes.

All precautions have been taken to avoid errors or misrepresentations of facts, equipment, or products. However, Melco does not assume any liability to any party for loss or damage caused by errors or omissions.

All trademarks and trade names used in this publication are the property of their respective owners.

Printed in the United States of America

Revision A, May 1997

Table of Contents

1. How to use This Manual

Scope of This Manual	1-1
Using Microsoft® Windows®	1-1
EDS III Help	1-1

2. Using a Computer

The Computer System	2-1
Pieces of the Computer System	2-2
Communicating with the Computer	2-3
Applications	2-4
Accessing Information	2-5

3. Installing EDS III

System Requirements	3-1
Hardware Installation	3-2
Software Installation	3-4

4. An EDS III Overview

Starting EDS III	4-1
EDS III Windows Overview	4-1
The Application Window	4-2
The Layout Window	4-3

5. Text Designs

The Text Tool	5-1
---------------	-----

6. Monogramming

Using a Monogram Alphabet	6-1
Monogramming with Regular Alphabets	6-4

7. Working with Designs

Opening Design Files	7-1
Designs as Objects	7-4
Saving a Design	7-7
Modifying Condensed Designs	7-8
Design Notes	7-9

8. Scaling

Scaling a Condensed Design	8-1
Scaling an Expanded Design	8-3

9. Step and Repeat

10. Using the Color Palette

Displaying the Palette Bar	10-1
Working with the Palette Bar	10-2
Color Information	10-3

11. Using Import and Export

Importing a Design	11-1
Exporting a Design	11-2
File Name Standards	11-4

12. Tiling and Cascading Windows

Tile	12-1
Cascade	12-2
Cut, Copy, and Paste	12-2

13. Working with Peripherals

Enabling the Peripheral	13-1
Sending Designs	13-2
Checking Peripheral Status	13-4

14. Ending an EDS III Session

Appendix A. Glossary of Embroidery Terms

Index

Addendum-Quick Reference Guide for EDS III

Specifications

EDS III is known to work with the following input and output devices:

Tape readers

Remex Spooler, model 660D-A
Remex Strip Reader, model RRK9000

Tape Punches

Facit model 4070

Tape Reader/Punch Combo Units

Facit model 4000
Facit model 5000

Scanners

Any scanner that supports a 16 bit Twain driver.

Digitizing Tablets

Any tablet that emulates Summagraphics
Microgrid.

Diagnostic Test Files

EDS III contains 3 diagnostic test files. They are:

- sewtest.exp (sew quality test)
- utctest.exp (underthread control test)
- trimtest.exp (trimmer test)

1. How to use This Manual

Scope of this manual

The purpose of this manual is to assist with Melco's EDS III Embroidery Design System. It is not a substitute for classroom training. If you have not received training, call your sales representative.

Using Microsoft® Windows®

Refer to the Microsoft Windows User's Guide for any Windows-related questions.

EDS III Help

Online help allows you to access context-sensitive information. Information is available by clicking on the Help button at the top right corner of the Menu Bar and by clicking on any word that is underlined (with either a solid or dashed line) and shown in green or red. When you exit help, you are returned to your original position.

Pressing the F1 key also displays help information:

- After highlighting an item on a drop-down menu
- While in a dialog box
- While in any EDS III program function

If you are new to computers

Chapter 2, "Using a Computer" provides the basic information you will need to use your computer with EDS III.

2. Using a Computer

The Computer System

This chapter covers the computer basics for EDS III. It is designed for new users with limited computer experience. It introduces terms and concepts used throughout this manual. If you are comfortable with computers, go to Chapter 3.

This chapter covers:

- The computer components
- Communicating with the computer
- How to navigate within an application
- How to access information

Pieces of the Computer System

A typical computer setup with input and output devices is illustrated in Figure 2-1. Please refer to it for the rest of this chapter.



Figure 2-1

The Monitor

The monitor looks like a television and is often referred to as the screen or the display. It offers a two-way channel for information between you and the computer, but does not perform any processing. It has its own power cord and power switch and is connected to the CPU with a special cable.

The CPU (Central Processing Unit)

The CPU is the computer's brain. Its role includes:

- Supervising the input and output devices, such as the keyboard, mouse, monitor, disk drives, printers, and sewing peripherals
- Carrying out instructions from computer programs, including Windows and EDS III
- Performing mathematical computations

Disk Drives

A disk is a storage device for computer files. Disk drives have electronic sensors called heads that read from and write to these disks.

The Hard Drive

The hard drive contains both read/write heads and a disk. It is physically sealed and is usually referred to as the **C** drive. When the prompt on your monitor reads C:\>, the computer is reading files from the hard drive.

Floppy Drives

A floppy drive has a read/write head, but must have disks inserted into it. The drive pictured in Figure 2-1 uses 3.5 inch disks. If you have only one floppy drive, it is usually named the **A** drive. If you have two floppy drives, the second one is usually named the **B** drive. When the prompt on your monitor reads A:\> or B:\> the computer is reading from a disk in one of the floppy drives.

CD-ROM Drive

The CD-ROM drive is a read-only drive that accepts CDs. CDs are a type of disk that hold up to 650MB of information. Often programs that are distributed on CDs need the CD inserted in the drive to operate, though this is not always the case.

Communicating with the Computer

You must give commands to your computer. For instance, the computer needs to know which application to run, and EDS III needs design and sewing instructions. The parts of your computer system which allow you to do this are called input devices.

Keyboard

The computer keyboard is similar to a typewriter. Most of the work you do on the keyboard will be displayed on the monitor.

The Mouse

The mouse is an input device with a cord that plugs into the back of the computer. The symbol that appears on the screen to mark your position is called a cursor, and it usually looks like an arrow. The mouse controls the movement of the cursor. When you slide the mouse across a textured surface, the cursor follows.

A mouse has buttons that are easily accessible by your fingertips. Clicking the left button signals the computer that a selection has been made at the cursor location.

Below are terms frequently used with a mouse:

Click means to place the cursor on a command, file name, box, or some other object and press the left button once. Most commands are selected by clicking on the command name, or a tool button.

Double-click means to place the cursor on a command or object and quickly press the left mouse button twice. Often a dialog box will display after double-clicking on an object.

Click and drag means to place the cursor on an object and press and hold the left mouse button down and move the mouse. As the mouse is moved, the object will move in the window. Release the mouse button when you have the object in the desired position. Clicking and dragging is also the method you use to highlight text for modification in a dialog box.

Digitizing Tablet

A digitizing tablet is an electronic surface and specialized mouse that work together to create a design file from any kind of flat artwork. The artwork is usually taped to the tablet's surface and the mouse is used to identify specific positions.

Paper Tape Reader

A paper tape reader is a device that will read instructions from a paper tape that has been encoded by a paper tape punch.

Applications

An application is a computer program that performs specialized functions (such as EDS III).

Windows

The Microsoft Windows operating system provides an interface that makes working with your computer easier. Instead of using DOS commands, Windows displays lists of options in menus. All you have to do is click on your choice. Refer to the Microsoft Windows User's Guide for more information.

EDS III

EDS III has screens with features similar to those in Windows. The EDS III Layout window is shown in Figure 2-2.

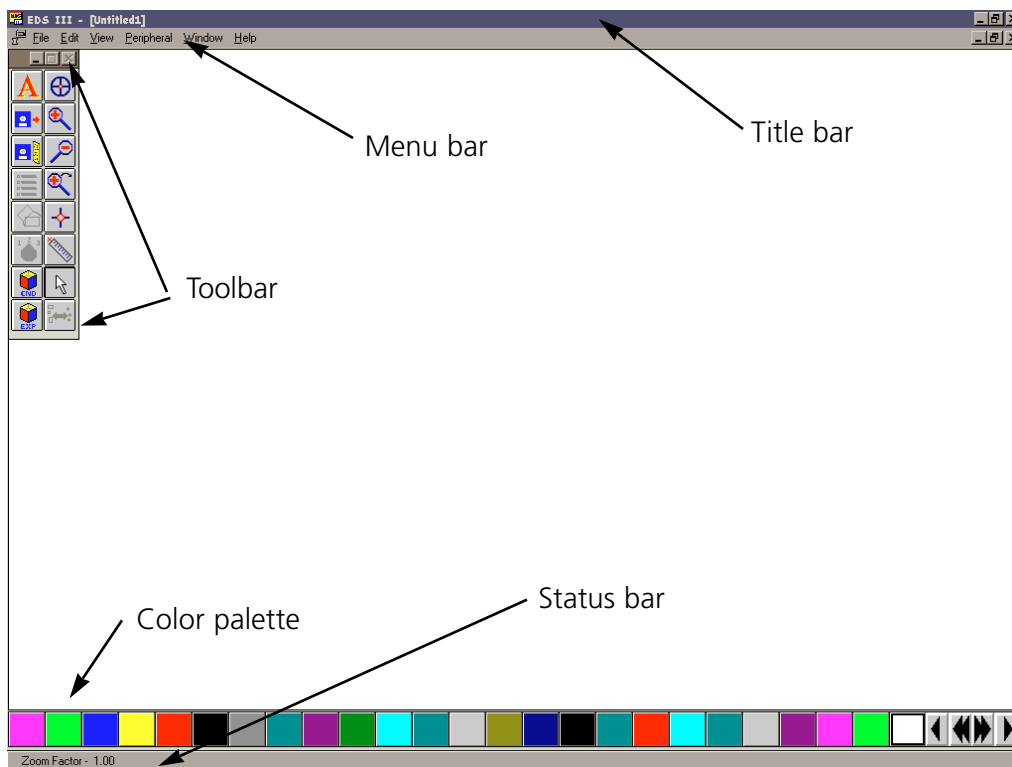


Figure 2-2

Menu Bar

The Menu Bar displays the main choices available in that window. Clicking on an option usually causes a drop-down menu to be displayed.

Drop-down menu

A drop-down menu contains more specific options related to your first selection. Click on the selection in the drop-down menu just as with the menu bar.

Dialog box

A dialog box, as shown in Figure 2-3, is a small pop-up screen. It is used when there are more choices for a menu. There are a variety of possible responses, including:

- Typing additional information
- Clicking on a box to toggle an option On or Off
- Clicking on a box to display a list of choices
- Clicking on one or more choices in a list

To type in text, click the mouse in the beginning of the text field. The cursor becomes a blinking vertical bar, indicating that you can type. To change text, click and drag the mouse across the text to highlight it, then type over the highlighted area.

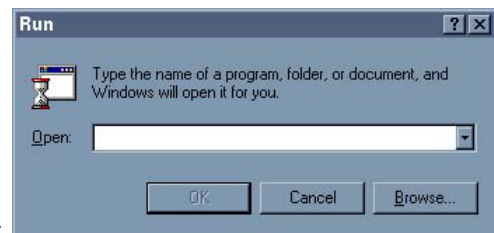


Figure 2-3

Toolbar

Many screens have a toolbar in addition to menu bars. These tools offer additional options for that screen and are activated by clicking on them. The EDS III Layout window tools are discussed in Chapter 4, "An EDS III Overview."

Accessing Information

Data is kept in files and stored on disks. The computer needs the name and location of a file to save or retrieve it.

Directories

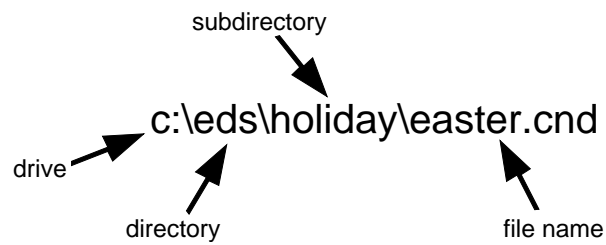
A hard disk or a floppy disk may contain many files. Directories help organize the files on the disk.

Subdirectories

Directories may be divided into smaller sections called subdirectories. Subdirectories may be divided into smaller subdirectories. Subdirectories are also useful in organizing files.

Paths

A path is the full name and location of a file as described below:



3. Installing EDS III

System Requirements

Refer to the following tables for minimum processor and memory requirements. The EMC 10/12 is not designed to be used in conjunction with Windows 95.

Windows 3.x				
	EDS III Basic	Tablet Digitizing	On-screen Digitizing	Online Manuals
EMC 10/12	386/40 4MB RAM	386/40 4MB RAM	386/40 16MB RAM	386/40 16MB RAM
EDS III	486/33 8MB RAM	486/33 8MB RAM	486/33 16MB RAM	486/33 16MB RAM

Windows 95				
	EDS III Basic	Tablet Digitizing	On-screen Digitizing	Online Manuals
EMC 10/12	N/A	N/A	N/A	N/A
EDS III	486/33 16MB RAM	486/33 16MB RAM	486/33 16MB RAM	486/33 16MB RAM

Also, your system must include the following:

- 8MB hard disk space to install EDS III (an additional 16MB is needed to install the online manuals)
- A Goldstar chipset on the controller (IDE) board to use Melco formatted disks
- 3.5 inch Disk Drive, 1.44 MB capacity
- A monitor and video card capable of displaying 800 x 600, 16 color resolution
- An Ethernet network board
- Parallel Port for Melco security dongle
- Mouse (Windows compatible)
- MS-DOS Ver 5.0 (or higher)
- Microsoft Windows Ver 3.1 (or higher), installed

If your computer was purchased from Melco, EDS III is installed and configured. Start your system by following the three steps below, then go to Chapter 4, An EDS III Overview.

1. Turn on the computer and monitor and start Windows.
2. Double click on the EDS III icon shown in Figure 3-1 to start EDS III.

If you purchased the EDS III software separately, install all included hardware and software using the procedures on the following pages.



Figure 3-1

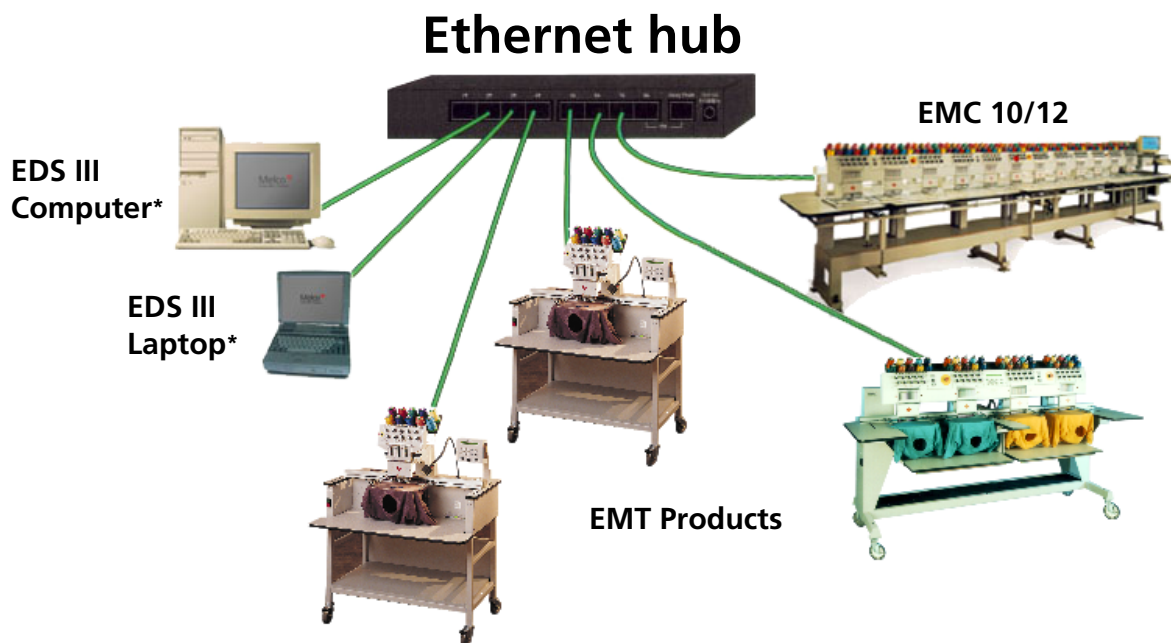
Hardware Installation

Ethernet™ networks

The peripheral network in EDS III now supports two types of network protocols; Starlan and Ethernet. Integrating an Ethernet network into the EDS III/peripheral network will offer many advantages to Melco customers, including:

- Faster (up to 10X) network communication between system and peripheral
- Meaningful names for peripherals
- More reliable systems

If you have one or more EMC 10/12 or EMT peripherals, you have the option of connecting the peripherals via an Ethernet network. With Ethernet, all your peripherals connect to a wiring hub. The hub is a small electronic device that contains a number of cable jacks and diagnostic lights. Refer to Figure 3-2 for a sample Ethernet network.



Each cable may be up to 100 meters (327 feet) long. Hubs may be daisy-chained for more capacity or distance.

Figure 3-2

If your peripheral or computer is not equipped with an Ethernet network card, you must install a compatible card in each to connect them. Refer to the documentation that was supplied with your ethernet cards to install them in the peripheral or computer.

Ethernet software

To upgrade an EMC 10/12 to operate on an Ethernet network, **you must upgrade your version of EDS III version 3.10 or later. When you upgrade your version of EDS III, the software to support your new Ethernet card will automatically be installed.**

Installing the Dongle

The dongle is a security device that must be installed in an active parallel port of your computer.

1. Locate an active parallel port on the rear of your computer. Usually this is LPT1, but it could be LPT2 if you have two parallel ports.
2. Turn the computer power OFF.
3. Secure the dongle with the captive screws at its sides.

Note: If you have a printer attached to your parallel port, remove the printer cable, attach the dongle, then reinstall the printer cable to the end of the dongle.

Bus Mouse Installation

If your computer already has a mouse, skip this step. However, if the mouse is plugged into a serial port and you wish to do tablet digitizing, you may want to install a bus mouse to free up the serial port. To install a Bus mouse, follow these steps:

1. Turn the computer OFF and unplug it from the wall outlet. Remove the computer CPU cover.
2. Discharge any static charge in your body by touching a non-painted area of the computer frame.
3. Locate an empty expansion card slot.
4. Remove the expansion slot cover to the rear of the computer.
5. Remove the bus mouse and mouse interface board from the box.
6. Make certain that the jumpers are placed over the pins labeled **IRQ5**.
7. Be sure the interface board is oriented the same way as the existing boards.
8. Insert the board into the slot and press down firmly until the board is seated evenly and completely.
9. Attach the bus mouse board to the rear of the computer frame with the screw from the cover removed in step 4
10. Connect the mouse cable to the connector on the back of the board.
11. Replace the computer cover.

Stargate Board Installation

If you purchased the Stargate board and expander box, refer to its installation and configuration instructions.

EDS III Installation

Microsoft Windows must be installed prior to installing EDS III. If Windows is not installed, refer to the Windows installation manual.

1. Insert the EDS III Program Disk 1 into the floppy disk drive.
2. Click on **Start→Run** (or **File→Run** if you are using Windows 3.x) to display the Run dialog box (Figure 3-3).
3. Browse to your 3½ floppy drive or your CD-ROM drive, depending on what media your version of EDS III came on.
4. Select **setup.exe** and click **Open** (or **OK** if you are using Windows 3.x).
5. Click **OK** and follow the on-screen instructions to install EDS III.

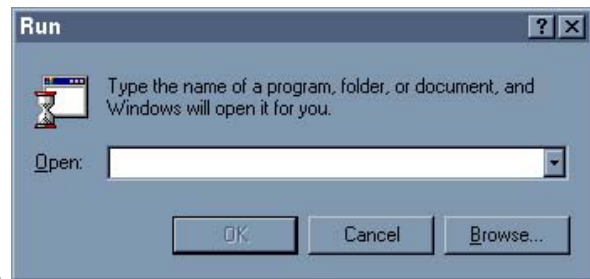


Figure 3-3

A message will appear warning that EDS III must be configured before use. Configuration is covered in the next section.

When the message displays instructing you to reboot the system, remove the disk from the disk drive, exit Windows and turn your computer off. Wait 3 seconds and turn it on again.

EDS III online manuals

Installation Instructions

Microsoft Windows must be installed prior to installing the online manuals. If Windows is not installed, refer to your Windows manual.

1. Insert the Online Manual Disk 1 into the floppy disk drive.
2. Click on **Start→Run** (or **File→Run** if you are using Windows 3.x) to display the Run dialog box (Figure 3-4).
3. Browse to your 3½ floppy drive.
4. Select **setup.exe** and click **Open** (or **OK** if you are using Windows 3.x).
5. Click **OK** and follow the on-screen instructions to install the Online manuals.

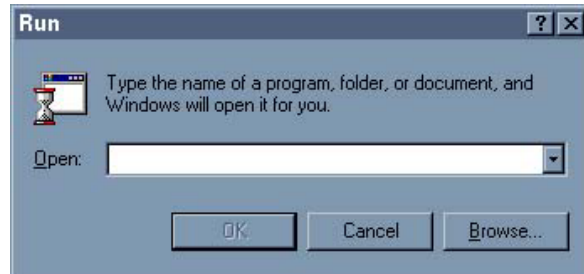


Figure 3-4

When the manuals are completely installed, click on Start→Programs→Melco Apps→Acroread (Windows 95) or the Acroread icon in the Melco Apps Group (Windows 3.x). This installs the viewer (needed to view the manuals).

Note: To access the online manuals from within EDS III, **Adobe® Acrobat® Reader must be installed into the c:\acroread directory.** During installation, Acrobat Reader defaults to the c:\acroread directory. If you change this directory, you cannot access the online manuals from within EDS III.

When installation is completed, you may delete the Acroread icon from the Melco Apps program group if you desire.

Accessing the Online Manuals

To access the online manuals from within EDS III, click on Help→Online Manuals (see Figure 3-5).

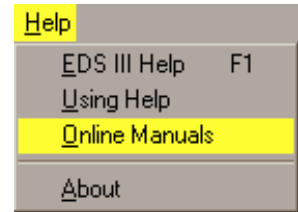





Figure 3-5

Using the Online Manuals

Acrobat Reader provides extensive help, which can be accessed by clicking on Help→Reader Online Guide (Figure 3-6).

Here are some of the basics you will need to navigate through the online manuals:

-  Click the GO BACK button in the tool bar to return you to your previous location.
-  Click the NEXT PAGE button in the tool bar to go to the next page of the manual.
-  Click the FIRST PAGE button in the tool bar to go to the first page of the manual.

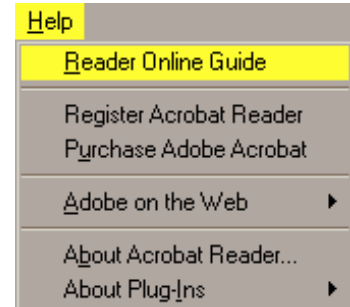


Figure 3-6

- Using Acrobat Reader
- Viewing PDF documents
- Using PDF on the Web
 - Making PDF documents acce
 - Calibrated color
 - Keyboard shortcuts (Macintos
 - Keyboard Shortcuts (Window
 - Paging shortcuts (Macintosh)
 - Paging shortcuts (Windows a
 - How to use this online guide

Along the left side of the screen are “bookmarks.” Click the bookmark name to go to the topic marked by that bookmark. Click the triangle to the left of the bookmark to show and hide subordinate bookmarks. The bookmarks for each manual provide a complete list of topics.

Configuring EDS III

Before starting EDS III for the first time, use the Config program to configure EDS III. Start Windows and follow these steps to configure EDS III:

- To access the configuration program from Microsoft® Windows® 95, click on **Start→Programs→Melco Apps→Config**.
- To access the configuration program from Microsoft® Windows® 3.x, double click on the **Config** icon in the Melco Apps program group.

Note: If you are using a StarGate communications board, refer to the Stargate manual for proper port settings.

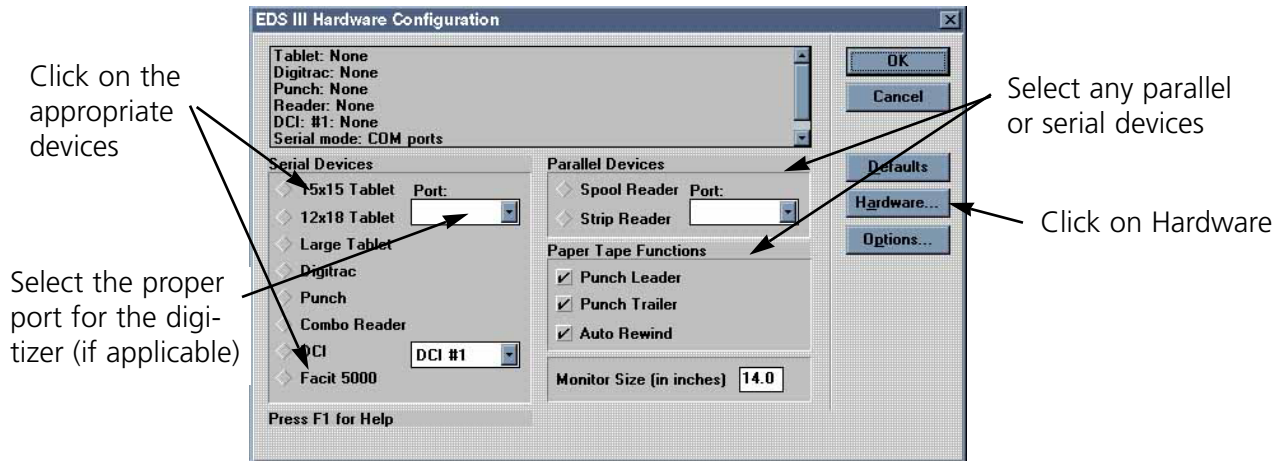


Figure 3-7

Hardware Configuration

When you click on Hardware in the Configuration dialog box, the Hardware Configuration dialog box appears (Figure 3-8).

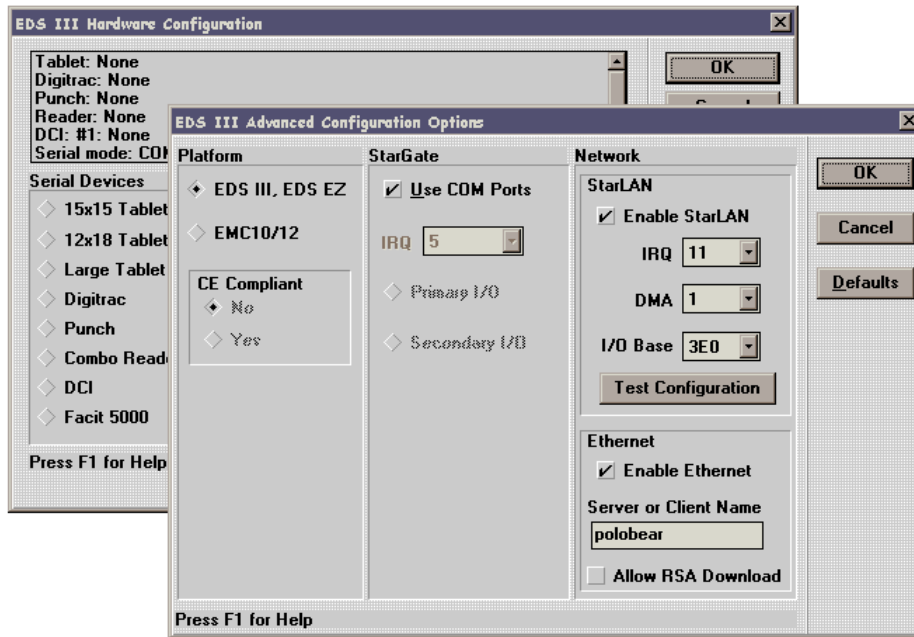


Figure 3-8

There is a Platform, StarGate, and a Network section. Specify which IRQ (interrupt request) will be used for each if you do not use the defaults. Remember to change the jumper settings if necessary.

Advanced Configuration Options

Click on the **Hardware...** button to display the Advanced Configuration Options dialog box. To enable the StarLAN network, click in the **Enable StarLAN** checkbox. To enable the Ethernet network for the EMC 10/12 or an EMT peripheral, click in the **Enable Ethernet** checkbox. The default setting is for both networks to be enabled.

Note: If a network is disabled, it will NOT function. If you have the NONNETWORK option, be sure to **disable** the StartLAN network.

The StarLAN board configuration may be tested by clicking on the **Test Configuration** push-button; a message will be displayed indicating success or failure of the card's configuration.

EMC 10/12

If you are using the EDS III software on a Melco EMC 10/12 peripheral, click on the EMC 10/12 box, then click OK. You must then select whether or not your EMC 10/12 is CE Compliant. If you don't know if your EMC 10/12 is CE Compliant, look for the CE mark on the frame below the computer. This configuration only needs to be performed once. **Do not select the EMC 10/12 option unless you are using the EMC 10/12 peripheral!**

Setting StarGate options

If you have a StarGate multiport communications device, refer to its instruction manual. If you do not have a StarGate, make sure **Use COM Ports** is selected.

Setting the StarLAN network options

In most cases, the default settings will work fine. Click on Default to accept these settings. If you wish to customize the settings, select the appropriate values.

Note: No two pieces of hardware may use the same IRQ or DMA settings. These instructions for installing the Melco boards work in most computers sold today without changing other settings.

Setting the Ethernet network options (EMC 10/12 and EMT Only)

Server and client name(s) are only applicable to users running an Ethernet peripheral network. EDS III is a **server** when the "Platform Selection" is set to EDS III or EDS EZ. EDS III is a **client** when the "Platform Selection" is set to EMC 10/12. In an Ethernet environment, the client/server name is used to identify the network components. You do NOT have to input the client or server name (EDS III will assign one if necessary), but you may change the client or server name by clicking in the "Client or Server Name" edit field (see Figure 3-9). The name should be limited to 16 characters.

The "Allow RSA Download" checkbox is only applicable to users running an Ethernet peripheral network. RSA downloading may be enabled or disabled by clicking in the checkbox. In a network with numerous servers, it may be useful to designate one server for RSA downloading.

Seeing which options are installed

Click on Options in the Hardware Configuration dialog to display the Set Options information box. Options are in gray if installed or black if not installed.

If you encounter problems during software installation, call Melco Telephone Support at (303) 457-2025 for assistance.

4. An EDS III Overview

This chapter provides an overview of the operation and features of EDS III.

Starting EDS III

Double click here
to start EDS III

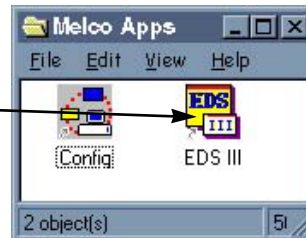


Figure 4-1

This screen appears
when EDS III is started



Figure 4-2

EDS III Windows Overview

The EDS III windows are work areas for creating and editing embroidery designs. Up to nine different windows may be open at one time. The window types are:

- Application Window
- Layout Window
- Object Edit Window (discussed in the Editing and Digitizing manual).

Work is performed in these windows using the menu bar across the top of the screen, the toolbar down the left side of the screen, and the various drop-down menus and dialog boxes.

The Application Window

The Application window (Figure 4-2) is the first screen EDS III displays. It has File, Peripheral, and Help in its menu bar. Using these you can:

- Open a new layout window
- Open a file from a disk
- Import designs from disks and paper tapes
- Send designs from the hard drive to the peripheral

File

Click on File in the menu bar and a drop-down menu offers these options:

New opens an empty Layout Window.

Open requests information for retrieving a DOS file. A more complete discussion of Open can be found in Chapter 7, "Working With Designs".

Import requests information for retrieving a file. A more complete discussion of Import is in Chapter 11, "Using Import and Export".

Design Database allows you to catalog your designs (available only if purchased as a separate item).

Preferences allows you to customize some of your system settings.

Exit closes EDS III and returns you to the Windows program manager.

The **Design List** is at the bottom of the menu. The last six opened files are listed here. Clicking on a name opens that design in the Layout Window.



Figure 4-3

Peripheral

The Peripheral menu has these options:

Transfer sends selected EXP and ASD design files from EDS III to the job queue of the peripheral.

Status displays peripheral sewing data. See Chapter 13, "Working with Peripherals" for a more complete description.

Client/Server list displays a list of all servers and peripherals (called clients). The dialog box is for informational purposes only. Each server and client will be identified by its name, which Ethernet network it is on, and its Ethernet address. Clicking **Update** polls the network for any new information.

Help

Provides access to on-screen help. See Chapter 1 for more information on how to use help.

The Layout Window

Open the Layout window from the Application window by clicking on File→New. The menu bar options are: File, Edit, View, Peripheral, Window, and Help.

From the Layout window shown in Figure 4-4 you can:

- Create lettering
- Add lettering to a design
- Open files from the hard disk and DOS format disks
- Import designs from paper tapes and non-DOS disk formats (Melco, Tajima, Barudan, Premier, and ZSK)
- Export designs to non-DOS formats and paper tapes
- Save design files to the hard drive
- Perform some customization of designs

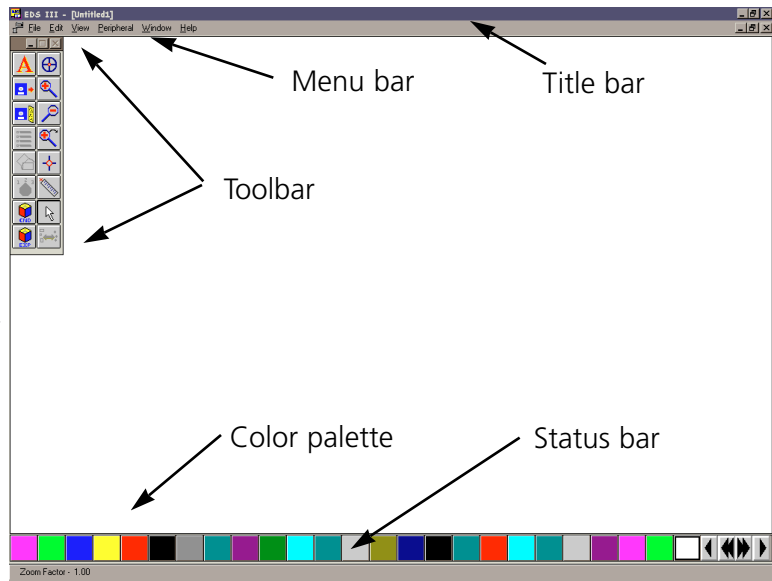


Figure 4-4

The File Menu

Click on File in the menu bar and the drop-down menu (Figure 4-5) offers the following options; only the options in **bold** are available.

New opens an empty Layout window.

Open requests information for retrieving a DOS file. A more complete discussion of Open is in Chapter 7 "Working With Designs".

Close closes the active window.

Save allows you to save a new design or changes to an existing design. If you are saving for the first time, the Save As dialog box will appear and prompt you for a file name. If you are saving changes to an existing file, the original file will be overwritten.

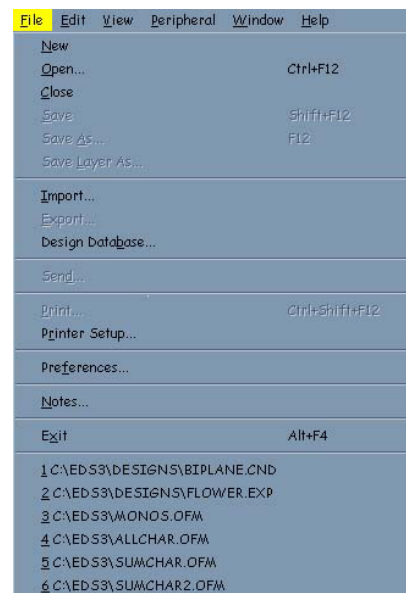


Figure 4-5

Save As displays the Save As dialog box. It prompts you for information to save your current design as a new file, or a second copy of an existing file. If you change a design, you may want to keep both the original and the modified versions. Each must have a unique name.

Import displays the Import dialog box.

Design Database allows you to catalog your designs (available only if purchased as a separate item).

Export prompts you for information necessary to copy a design file to a disk or paper tape.

Send transfers a design to a selected peripheral.

Print displays the Print dialog box.

Printer Setup prompts you for printer information. Clicking on Setup in the dialog box allows you to change or update information about the selected printer.

Preferences allows customization of some system settings.

Notes allows you to write notes about your current design and save them with the design. This feature will only work with object (.OFM) files.

Exit terminates EDS III and returns you to the Windows Program Manager after giving you an opportunity to save any open files.

The **Design List** displays the last six opened designs.

The Edit Menu

Only commands in bold print are accessible (see Figure 4-6). Some grayed-out commands will be available in other windows or when screen objects are selected. Others are only available with the editing and digitizing options, and are discussed in the Editing and Digitizing in EDS III manual.

Undo is used to “undo” certain actions. Not all EDS III actions are supported by Undo.

Redo is used to “redo” certain actions. Not all EDS III actions are supported by Redo.

Goto Dataset places the cursor at the specified dataset in a design.

Search searches for a specified dataset.

Center Design places the design's center in the exact center of the peripheral's sewing field. This is an important step before sending designs to be sewn.

Return to Origin is on when a check mark appears next to it. Activate this option by clicking on it. It returns the needle to its origination point when a design has finished sewing.

Digitize and Scan/Graphics are only available if you bought these options and are covered in the Editing and Digitizing manual.

Design Cleanup displays the Design Cleanup dialog box. Delete Short Stitches is useful in designs that have been reduced or are having thread breaks. Accumulate Jumps and Accumulate Needle Ups is especially useful for Chenille peripherals.

Step and Repeat is a derivative of Copy and Paste. It moves to a specified new position and repeats a particular action.

Cut, Copy, Paste and **Clear** are used to duplicate or delete designs.



Figure 4-6

The View Menu

Only the bold commands in the View menu can be accessed (see Figure 4-7). Others are only available with the editing and digitizing options, and are discussed in the Editing and Digitizing in EDS III manual. A checkmark next to an option means it is turned on.

Regenerate redraws the design in the current window.

Pan relocates the center of the layout window. Click the left mouse button at the spot where you want the new center location to be.

Zoom In enlarges a portion of the design on the screen. Select the area by clicking and dragging the magnifying glass cursor over it. This is useful for more precise editing. It does not affect sewing size.

Zoom Out decreases the design size on the screen. Select the area by clicking and dragging the magnifying glass cursor over it. It does not affect sewing size.

Zoom Last returns you to the previous Zoom view.

Fit Window redraws the design to fill the entire screen. Does not affect sewing size.

Actual Size draws the design on the screen at its sewing size.

Show Zoom Factor displays the current zoom factor on the status bar.

Display Mode displays Stitches, Expanded Points, Condensed Points, and Design Origin depending on your selection and file type.

Grid displays a dialog box to select one of three size grids for exact positioning of design elements. There is also a Snap to Grid feature that allows you to move the cursor in 1 to 127 point increments. The grid may be displayed as either dots or lines.

Palette displays the Named Palette dialog box which allows you to toggle the palette display at the bottom of the screen on and off, name and save a palette, select a saved palette, and select the number of colors to be used before wrapping back to color number one.

Tool Bar allows you to hide or display the toolbar.

Stitch List shows the stitch list (when you are in editing or digitizing mode).

Status Bar toggles the design information displayed at the bottom of the screen on and off.

Design Status displays stitch count, number of color changes, size of the design, and other statistics about the current design.

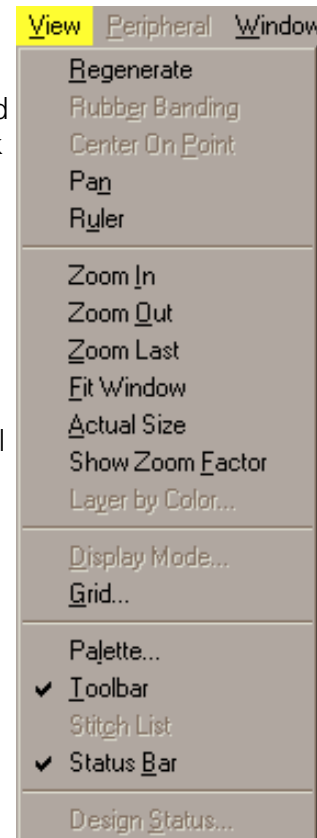


Figure 4-7

The Peripheral Menu

The Peripheral Menu shown in Figure 4-8 provides communication with the sewing peripheral. Refer to Chapter 13.

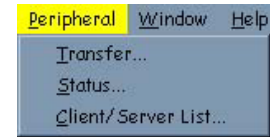


Figure 4-8

Transfer displays the Transfer File dialog box for selecting one or more design files (either EXP or ASD) to send to the peripherals.

Status displays information about all of your Melco peripherals.

Client/Server list displays a list of all servers and peripherals (called clients). The dialog box is for informational purposes only. Each server and client will be identified by its name, which Ethernet network it is on, and its Ethernet address. Clicking **Update** polls the network for any new information.

The Window Menu

The Window menu shown in Figure 4-9 controls the arrangement of your open Layout windows.

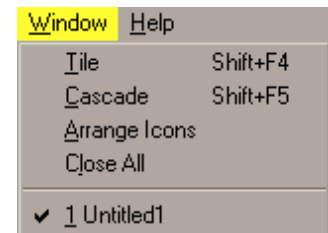


Figure 4-9

Tile divides the screen into as many as nine equal Layout windows. You can designate one of them as the current window by clicking on it.

Cascade displays multiple Layout windows by overlapping them while keeping the title bar of each visible.

Arrange Icons lines up design icons that are created when any Layout windows are minimized. These icons are displayed in the Application window and each shows the name of the featured design. When you click on Arrange icons, the icons are automatically lined up in a neat row.

Close All closes all open windows.

The **Design List** provides the names of the designs currently open.



The Zoom Last magnifying glass returns you to the previous view level.



The Pan tool allows you to move around the current design without having to zoom in or zoom out.



The Ruler tool allows you to measure a design in the Layout window in either inches and points or centimeters and points.



The Normal Cursor tool returns you to the standard arrow-type cursor from any sticky tool.



The Editing—Layout tool displays a selected object in the Object Edit Window. This tool is accessible only if you have purchased the editing and/or digitizing options.

Help Tags

When you move the arrow cursor over any of the Toolbar buttons, a help tag will appear to identify that particular tool. This feature may be turned On or Off in the Preferences dialog box. If a tool is greyed out, it is not available at that time.

File Types

The term **file type** refers to the way design data is coded and named. In EDS III there are four file types: Expanded, Condensed, Object, and Auto Send.

Expanded Files

An Expanded design file contains instructions for each individual stitch. Modification of an expanded design is much more limited than modification of a condensed design. Once you save a file as Expanded, you cannot change it to Condensed. Expanded file names have the extension EXP.

Condensed Files

A Condensed file contains summarized design instructions. Its format allows the design to be rescaled and its density and stitch length modified. Condensed file names have the extension CND.

Object Files

An Object file contains information about multiple objects, each with its own separate instructions. For instance, you might combine a .CND, .EXP and a lettering design into one Object file.

Then, you can modify each object separately. You could alter any design within the file separately without affecting the other designs. Object file names have the extension OFM.

Auto Send Design Files

An Auto Send Design file is created by EDS III when transferring or sending files to a peripheral. In addition to your design data, the file contains special instructions added by EDS III to help the peripheral make a sewing recovery after a power failure. Auto Send Design files have the extension ASD.

ASD files are stored in the EDS3\ASD subdirectory. To prevent this directory from taking up too much of your hard drive, delete old files periodically using the Windows File Manager. For more information on how to use File Manager, consult your Windows User Manual.

Preferences

This feature allows you to personalize the way EDS III works. The Preferences dialog box is available from the File Menu and is shown in Figure 4-11.

The following choices are available:

- **File Open:** If "Name" is chosen, the Open dialog box lists the designs by their titles. If "Picture" is chosen, the Open dialog box is replaced with a dialog box that displays a pictorial representation of the designs. For more information on the Open options, refer to Chapter 7, Working With Designs.
- **Actual Size/Fit Window:** When a checkmark appears next to Actual Size, designs will load into the layout window at actual size. To have designs load fitted to the window, click next to Fit Window.
- **Auto Save Every:** If a zero is entered here, Auto Save is turned off. To activate Auto Save, enter the desired interval between saves. Remember a save is a time-intensive operation for the computer. Checking the Prompt User box tells EDS III to confirm every auto save with the user.

Note: If the Save As dialog box appears (from Auto Save) when you are moving a point with the right mouse button, the release of the right mouse button may not be detected by Windows. If this happens, the point being moved may continually follow the cursor. To remedy this situation, simply press and release the right mouse button.

- **Lettering:** When a checkmark appears next to "Retain Parameters", the Text dialog box saves all of the adjusted settings from the previous time lettering was used. If this option is turned off (no checkmark), the Text dialog box reverts to default settings.

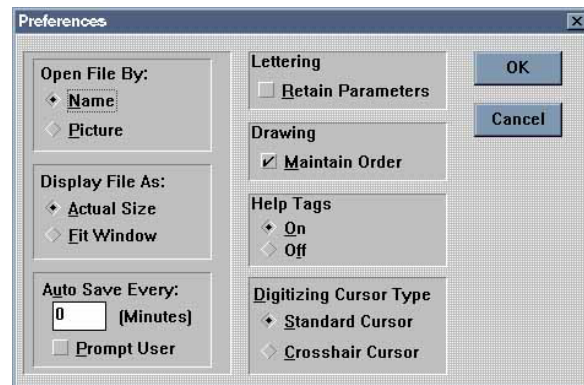


Figure 4-11

- **Drawing:** When a checkmark appears next to "Maintain Order", EDS III maintains the drawing order. This means that if a design file contains several objects that overlap each other, the object that will sew first will be drawn first, then the next, until all objects have been drawn. This ensures on-screen objects appear the same as when sewn out, although the checking process may slow down processing time. Turning this option off speeds up processing time but objects sewn may not display in the same sequence as they sew.
- **Digitizing Cursor Type:** If you purchased the editing and digitizing features for EDS III, you have the option of changing the cursor from the standard arrow shape to a crosshair version (refer to Figure 4-12). The crosshair cursor may be easier to use for on-screen digitizing.
- **Help Tags:** When you move the cursor over any of the tool buttons, a yellow help tag appears. This feature is enabled when a checkmark appears next to "Help Tags".

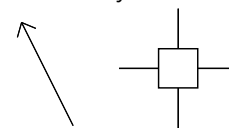


Figure 4-12

After you have set your preferences, click OK to accept or Cancel to cancel and return to the Layout window.

5. Text Designs

Designs and alphabets are sometimes thought of as separate entities; but, alphabets are really a set of designs. Normally there is a design for each letter, number, and punctuation mark in the set. When you buy your computer from Melco, 20 alphabets come loaded on the hard drive.

The Text Tool

Creating text begins with the Text tool . Click on it and the Text dialog box displays.

The Text Dialog Box

The options in this dialog box (Figure 5-1) affect the way your lettering displays on the screen and the way it sews.

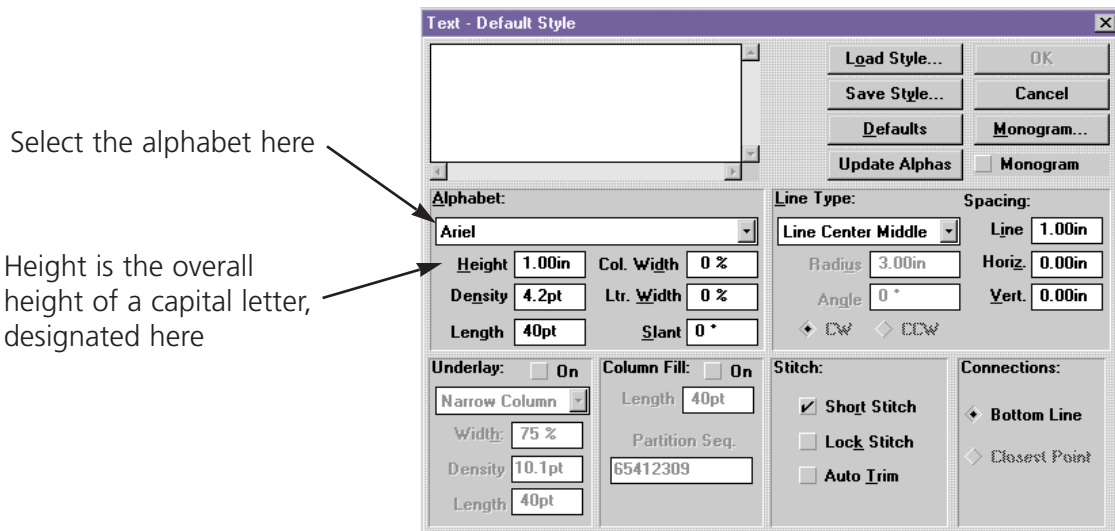
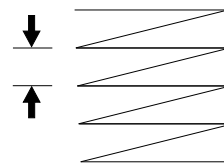


Figure 5-1

Density

In the EDS III Text dialog box, the density box refers to the space between each line of stitching (see Figure 5-2). When this space is decreased, the lines of stitching per inch increases. To create more lines of stitching per inch, decrease the density value. A general rule of thumb is:

- As design height **increases**, density value should **decrease**.
- As design height **decreases** density value should **increase**.



Density is the measurement of the distance between lines of stitches in a column

Figure 5-2

EDS III defaults to a density of 4.2 points (about 60 lines of stitching per inch). This is a useful density for many applications. Consider the following when determining density:

- Letter height
- Thread type
- Fabric type
- Color contrast between thread and fabric

An embroidery point equals 0.1 mm, or 254 per inch. The online help includes a Density Conversion Table with stitches-per-inch equivalents.

Note: Changing the density only affects column or satin stitches. Some alphabets are composed of fill stitches and changing the density will not alter their appearance.

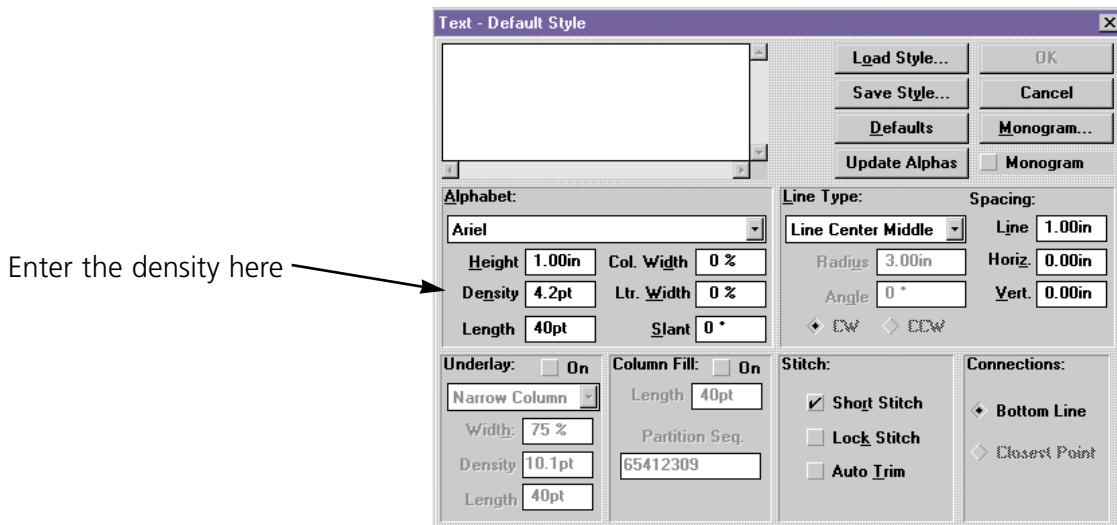


Figure 5-3

Length

Length determines the length of each walking or running stitch used to move from one area of sewing to another or as the underlay. These stitches are often covered by column stitching. Use the following as a guide:

Lettering Size	Running Stitch Length
0.5 inch or greater	30-40 points
0.25 inch to 0.5 inch	25-30 points
0.25 inch or smaller	20-25 points

Column Width

Column Width, abbreviated Col. Width on the screen, increases or decreases the width of the individual column in a letter, but not the overall width of the letter.

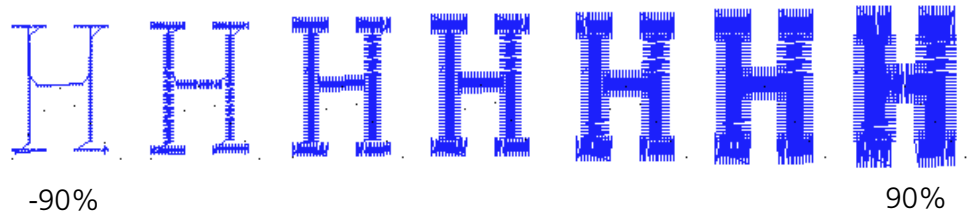


Figure 5-3

The value can be changed in increments of 10%, from +90% to -90%. Figure 5-3 shows a column width range on a block H.

Letter Width

Letter Width, abbreviated Ltr. Width on the screen, increases or decreases the overall width of each letter. The value can be changed in increments of 10%, from +30% to -30%. Figure 5-4 shows a letter width range on a block H.

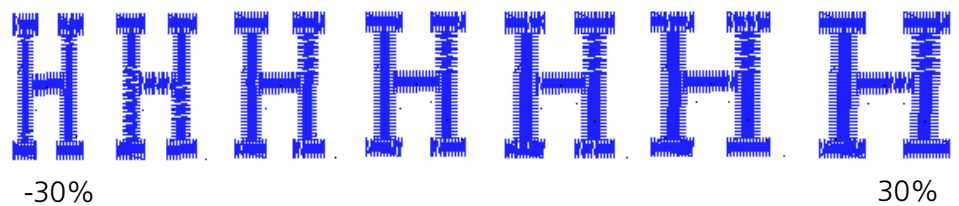


Figure 5-4

The value can be changed in increments of 10%, from +30% to -30%. Figure 5-4 shows a letter width range on a block H.

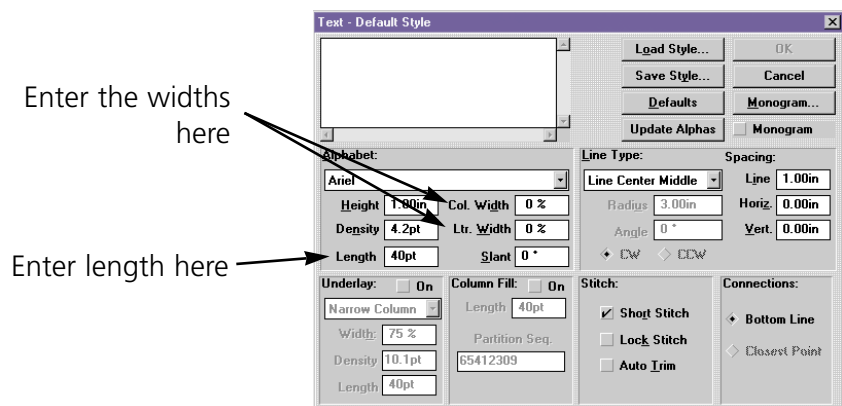


Figure 5-5

Slant

Slant inclines lettering in increments of one from +15 to -15. Positive values slant lettering to the right and negative values slant to the left. Figure 5-6 shows a slant range on a block H.

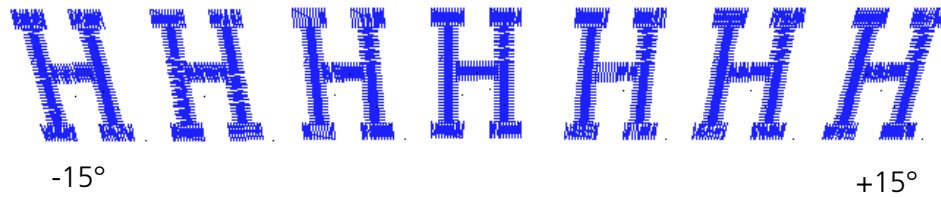


Figure 5-6

Line Type Options

There are five choices for line type:

- Line Center Middle
- Line Center Bottom
- Line Normal
- Arc Normal
- Arc From Center

You can sew in various types of arced or straight lines. Radius, Angle, CW and CCW are used when sewing the arc line types.

Line Center Middle

Line Center Middle centers lettering both horizontally and vertically around the needle starting and ending point (see Figure 5-7).

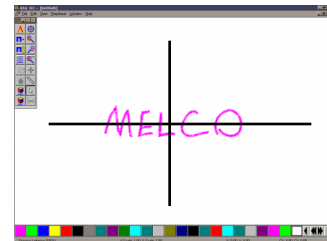


Figure 5-7

Line Center Bottom

Line Center Bottom centers lettering horizontally at the needle starting point, which becomes the lettering baseline (see Figures 5-8). In most alphabets the tails of the lower case letters such as g, j, p, q, and y extend below the baseline.

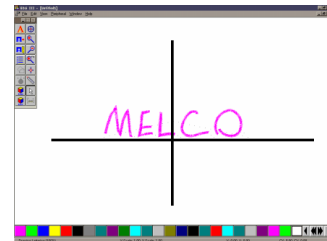


Figure 5-8

Line Normal

Line Normal starts the lettering at the current needle position, which is also the lettering baseline (see Figure 5-9). When the lettering is finished, the needle will not return to its original position.

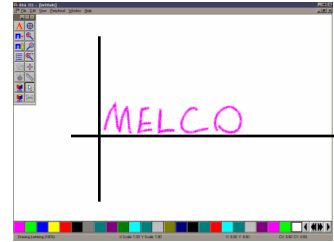


Figure 5-9

Arc Normal

Arc Normal sews lettering in a curve. The needle starting position is the lettering baseline, with the text centered around the needle point (see Figure 5-10).

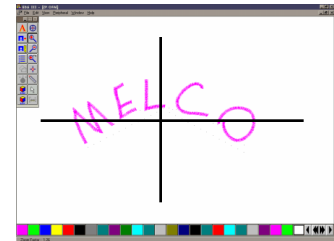


Figure 5-10

Arc From Center

With Arc From Center, the needle position prior to sewing is at the center of a circle that would be formed if the arc were completed. The first needle movement is from that center point to the circumference which is the lettering baseline (see Figure 5-11).

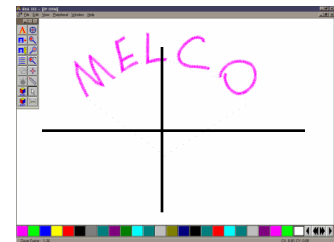


Figure 5-11

Radius

Radius controls the degree of curve in an arc (see Figure 5-12). An arc is part of a circle's circumference or edge. The radius is the distance from the center of the circle to the circumference. The larger the radius, the flatter the curve.

ASDFGHJ

Radius = 0.25 inch

ASDFGHJ

Radius = 0.75 inch

ASDFGHJ

Radius = 1.0 inch

Figure 5-12

Angle

Angle determines the location of the text center point. It is entered in degrees, with 0 at the top of a circle, and 180 at the bottom (see Figure 5-13).

CW (Clockwise) and CCW (Counterclockwise)

Figure 5-14 shows to sew in a clockwise direction when text is in the top half of a circle and counter-clockwise when text is in the lower half of a circle.

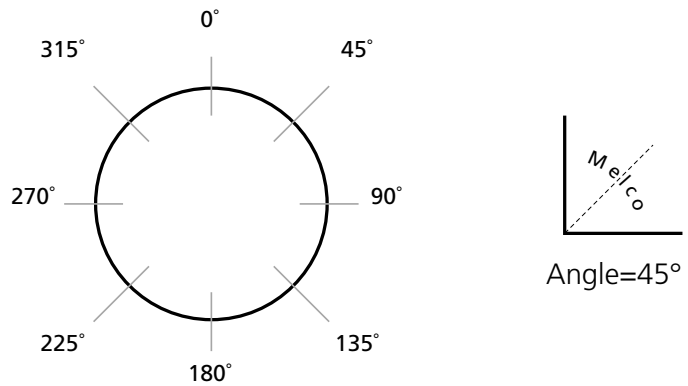


Figure 5-13

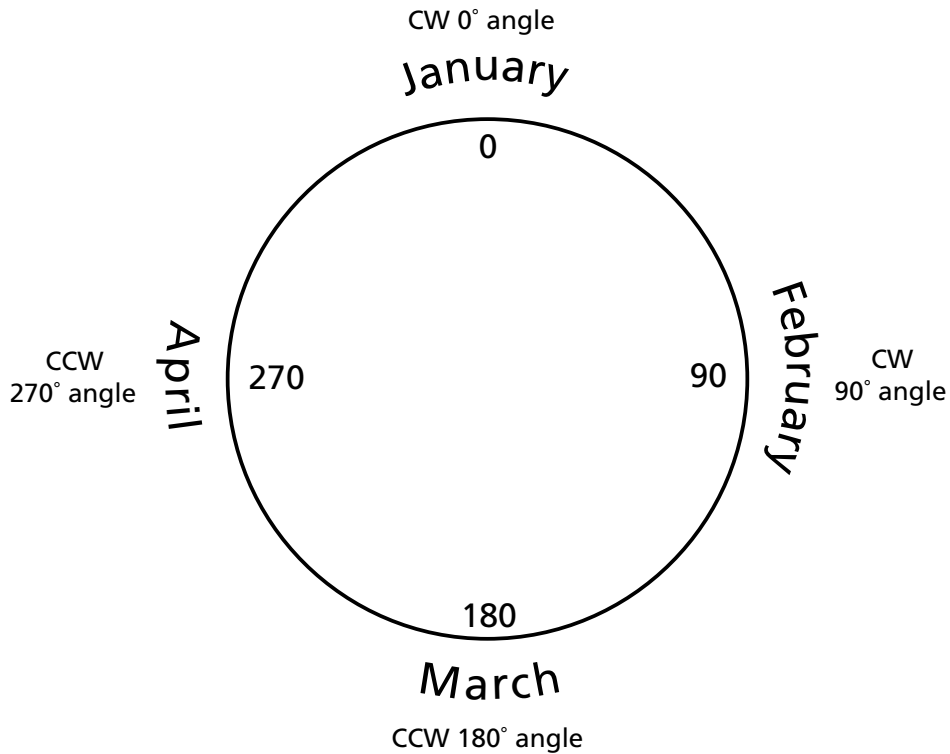


Figure 5-14

Spacing

Sometimes text is too crowded or too loosely spaced. This often happens to arc lettering (see Figure 5-15). Use the following techniques to adjust spacing.

At the Text dialog box, locate Spacing in the middle right corner. Under Spacing is an option which allows you to increase or decrease the distance between all the letters in your text by a uniform amount. With letters of 0.75 inches in height, adding 0.10" helped the spacing, but the E M B letters at the lowest part of the arc are still too close (figure 5-16). If more horizontal spacing is added, some of the other letters would be too far apart. Now customized spacing is needed.

In the text dialog box, place the cursor between the letters needing space added, then press F8. A » symbol appears between the letters (Figure 5-17). Repeat as needed until spacing is adequate (Figure 5-18).

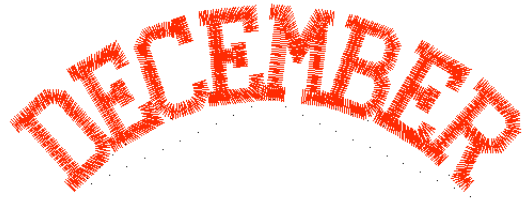


Figure 5-15

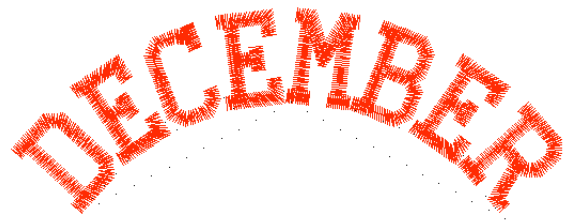


Figure 5-16

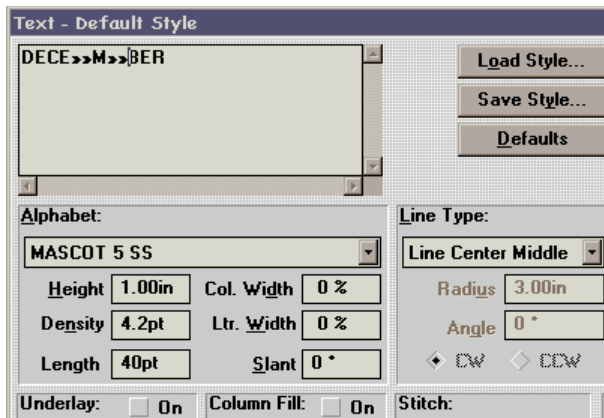


Figure 5-17

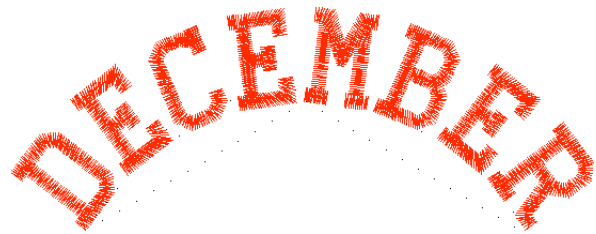


Figure 5-18

Each » adds a space equal to 1/16 of the letter height. For example, with a 1" letter the space would be 1/16". With a 0.5" letter, the space would be 1/32".

Similarly, you can decrease the space between letters that are too far apart in a similar manner. In the Text dialog box, place the cursor between the letters that are too far apart and click. Press F7 and a « symbol appears between the letters. Click OK to move the letters closer together. Each « subtracts a space equal to 1/16 of the letter height.



Increase space=F8
Decrease space=F7

Line Spacing

Line spacing is defined as the distance from the bottom of one line to the bottom of the next. A letter height of 1.0 inch with a line spacing of 1.0 inch makes the letters from each line touch (see Figure 5-19). To have space between the letters, you must have a line spacing **greater** than the letter height. If it is less than or equal to the letter height, the letters will touch or overlap. Use the following formula to determine line spacing:

$$\text{Letter height} + \text{desired space between lines} = \text{Line Space}$$

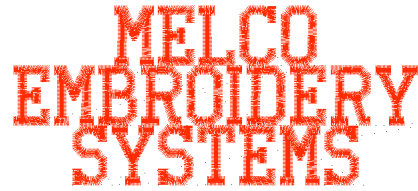


Figure 5-19

Vertical Spacing

Vertical spacing allows you to stair-step lettering up or down. (This feature cannot be used with Arc formats.) In the text dialog box, locate the Vertical option. This value defaults to 0.00. When positive values are inserted, the letters stairstep up (Figure 5-20). When negative values are inserted, the letters stairstep down (Figure 5-21).

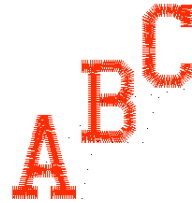


Figure 5-20

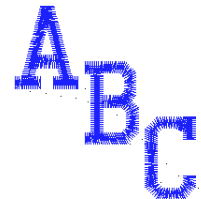


Figure 5-21

Color Changes (F6)

A Color Change is an instruction to the peripheral to pause for a rethread on a single-needle machine, or to change to a different needle on a multi-needle machine. It also changes the color in the Layout window to the next color in the palette.

To add a Color Change in the Text dialog box, place the cursor between the letters and click, then press the F6 key. A ^ symbol marks the Color Change (Figure 5-22).

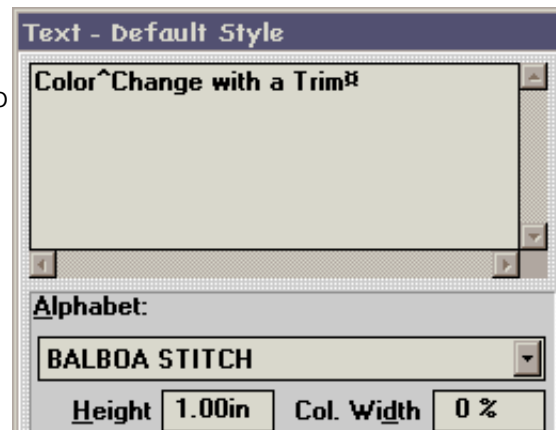


Figure 5-22

Trims (F9)

A Trim command causes peripherals equipped with trimmers to perform a trim between each letter. Trims between lower case script lettering are unnecessary. Add a trim in the Text dialog box by clicking the left mouse button between the letters you want to trim. When the cursor appears, press F9. A # symbol will appear in the Text screen to mark the trim (Figure 5-22). There will be no visible difference in the Layout window.

Defaults

Clicking on the Defaults option in the upper right area of the Text dialog box returns the settings to the default values.

Styles

A Style is a set of options which can be saved and loaded for later use. This eliminates re-entering individual values.

Follow these steps to save a style:

1. Click on Save Style in the upper right of the Text dialog box.
2. When the Save Style dialog box displays (Figure 5-23), click one or both: Character Style to save the alphabet and its parameters, Line Style to save the line type and its parameters, (check marks appear next to selected choices).

3. Type in the Style Name.

4. Click on OK.

To retrieve a style:

1. Click on Load Style.
2. Click on the Style Name in the dialog box (Figure 5-24).
3. Click on OK.

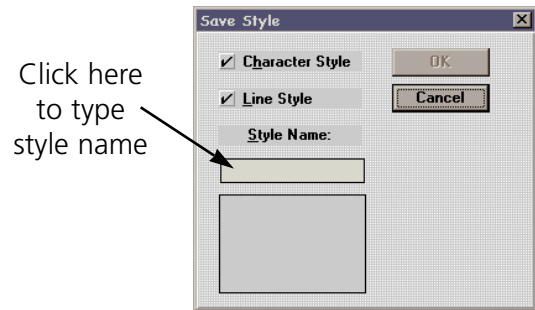


Figure 5-23

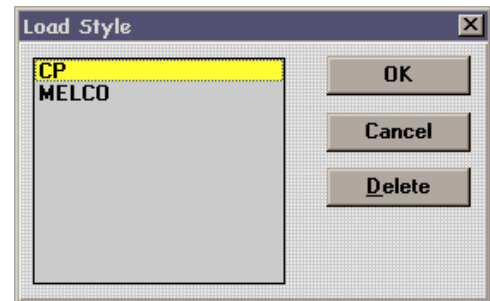


Figure 5-24

Underlay

Underlay stitching improves sewing quality by adding stability to a design. Narrow column underlay holds down the nap of fabrics like terry cloth. Edge walk underlay is useful on knits.

Turning Underlay ON allows you to choose one of the three underlay options for column stitching shown in Figure 5-25. Underlay works with Alphabet, Monogram, and Design files.

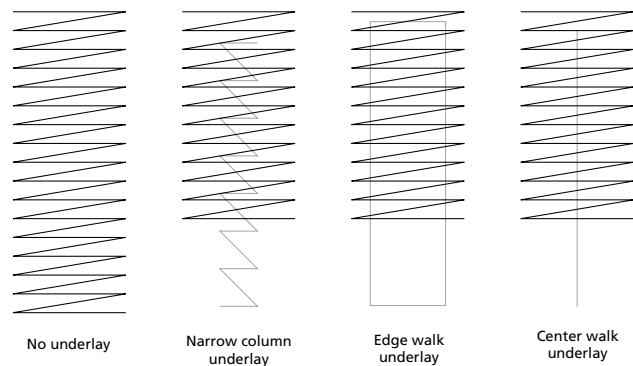


Figure 5-25

Width

Width applies to Narrow Column and Edge Walk underlays. It sets the underlay width as a percentage of the column width and can be set from 40% to 95% of the column width.

Density

Density sets the underlay density for Narrow Column. The allowable range is 2.6 pts. to 84.7 pts.

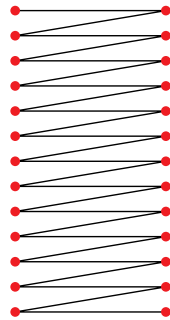
Length

Length sets the underlay stitch length for Edge Walk and Center Walk.

Column Fill

When turned On, Column Fill converts column stitching (also called satin stitching) to fill stitching, as shown in Figure 5-27.

Column stitch with needle penetrations at the edges of the column



Column fill with needle penetrations throughout the column

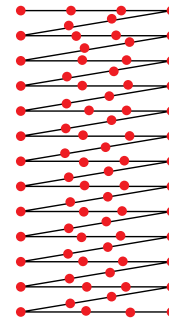


Figure 5-27

Instead of a single stitch across the entire width of a column,

there is a series of shorter stitches. These shorter stitches are less likely to snag, pull out, or break. You may want to turn Column Fill on when sewing large letters.

Note: When Column Fill is on, it will be applied to all columns within the selected object.

Length

Determines the length of each column fill stitch. The default is 40 points.

Partition Sequence

When there are multiple stitches in a column, they can sew in a variety of patterns. Partition Sequence determines where the needle penetrations will be on each line. The default value is sufficient for lettering. Additional information on the partition sequence can be found in the Editing and Digitizing manual.

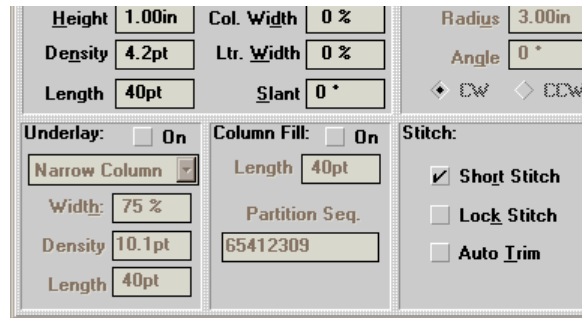


Figure 5-26

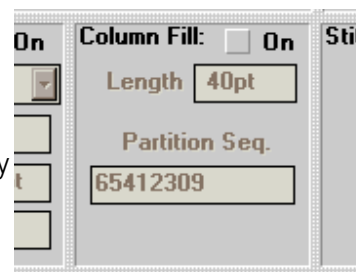


Figure 5-28

Stitch

The Stitch option refers to the three options discussed below.

Short Stitch

Short Stitch generates stitches shorter than the full column width on the inside of a curve or corner. This prevents repeated needle penetrations in one spot as shown in Figure 5-30. Clicking in the box next to Short Stitch toggles the option On and Off. The default is On.

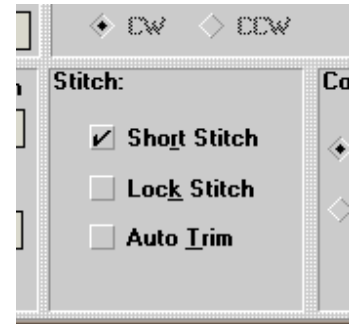


Figure 5-29

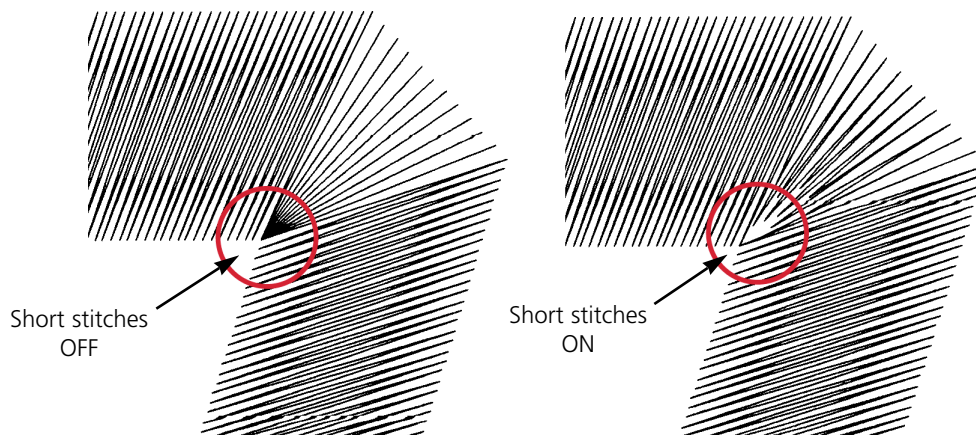


Figure 5-30

Lock Stitches

Lock Stitches are several small stitches sewn to prevent column stitching from being pulled out. Click the box next to Lock Stitch to toggle this function On or Off. The default is Off. Melco alphabets and most designs already have lock stitches coded into them.

Auto Trim

When Auto Trim is toggled On, it places a trim command at the end of each letter. Default is Off.

Closest Point Lettering

When a Closest Point alphabet is used (5 closest point alphabets ship with EDS III) you may choose to have the letters connected using Bottom Line Connection (Figure 5-32) or Closest Point Connection (Figure 5-33).

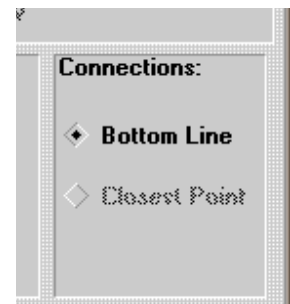


Figure 5-31



Figure 5-32

Figure 5-33

Transformed Objects

Just as you are able to create letters on a slant or an arc or with a different width, you can also distort (or transform) text and designs in a variety of ways. All of the following designs begin with a normal line of text.

Bridging

Click on the text with the left mouse button. An object box with drag handles appears around the text (see Figure 5-34).

To transform the text, click the **right** mouse button on the upper middle handle of the object box. Hold the right mouse button down while you drag the handle toward the bottom of the text. You will see the object box move or bend. The further you stretch, the more pronounced the final arc will be.

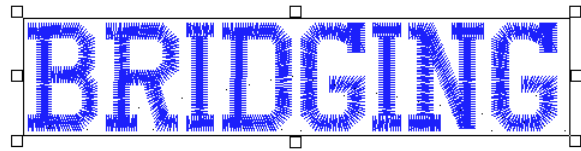


Figure 5-34

Note: You cannot stretch the object box beyond the opposite side boundary, nor stretch it beyond a semi-circle. Also, words should not be stretched more than once. Type a new word and begin again.

Lettering jobs that will be bridged should be run with a column width of 0. Column width can be increased or decreased AFTER the bridging operation.

When you release the mouse button, a dialog box appears (Figure 5-35). Click Yes to transform the lettering. Once the lettering has been transformed, you will not be able to edit the text because it is now a condensed design.

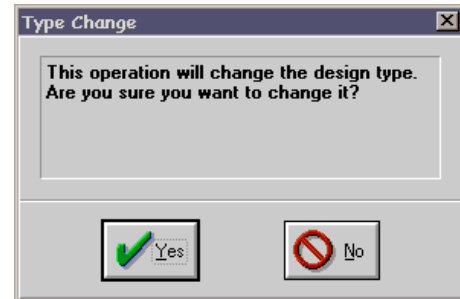


Figure 5-35

The design will look like Figure 5-36 (or Figure 5-37 if you used the lower drag handle).

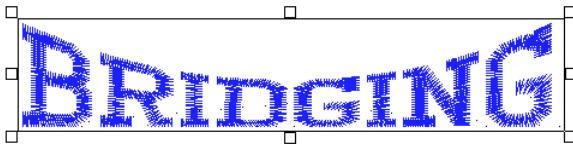


Figure 5-36

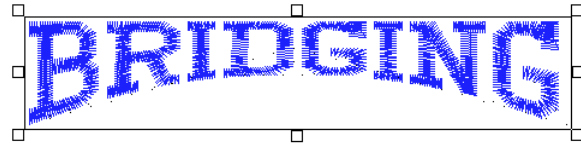


Figure 5-37

Squeezed

Click on the text with the left mouse button. An object box will appear around the text. Press and hold the [CTRL] key down and simultaneously click and hold the **right** mouse button (on either the upper or lower middle handle of the object box) while you drag the handle toward the middle of the box. Release the [CTRL] key and mouse button when the desired arc has been reached.

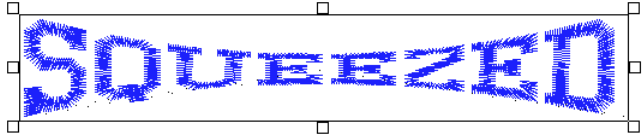


Figure 5-38

Ballooned

Click on the text with the left mouse button. An object box will appear around the text. Press and hold the [CTRL] key down and simultaneously click and hold the **right** mouse button (on either the upper or lower middle handle of the object box) while you drag the handle away from the box. Release the [CTRL] key and mouse button when the desired arc has been reached.

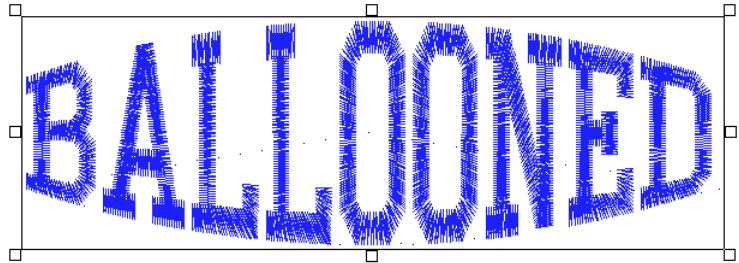


Figure 5-39

Vertical Bridge

Click on the text with the left mouse button. Click with the right mouse button on the upper middle handle of the object box. Press and hold the right mouse button while you drag the handle upward from the box. Release the mouse button when the desired bridge has been reached. This effect will also work when bridging the text downward.

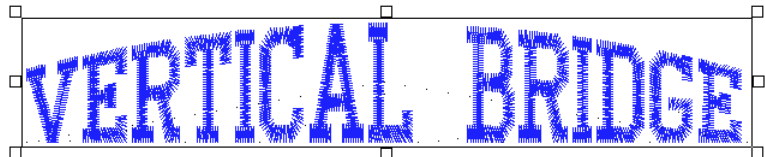


Figure 5-40

Vertical Arc

Click on the text with the left mouse button. Press and hold the [SHIFT] key down, then click with the right mouse button on the upper middle handle of the object box. Continue to hold the mouse button while you drag the handle away from the box. Release the [SHIFT] key and mouse button when the desired arc has been reached. This effect will also work when arcing the text downward.

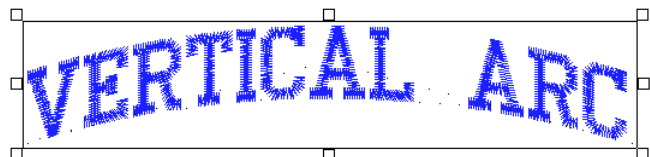


Figure 5-41

Pennant Stretch

Click on the text with the left mouse button. Click with the right mouse button on the upper right handle of the object box. Continue to hold the mouse button while you drag the handle upward. Release the mouse button when the desired stretch (maximum of 200%) has been achieved.

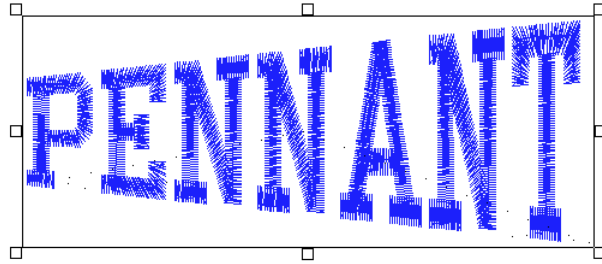


Figure 5-42

For added effect, you may also squeeze one end together, after the other end has been stretched.

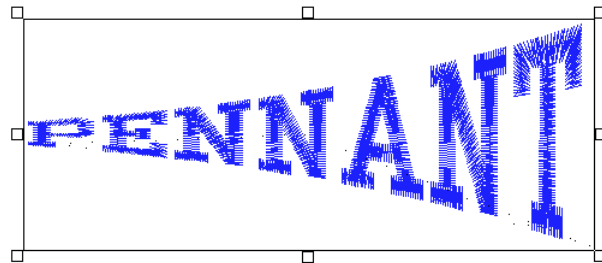


Figure 5-43

Slanting

Click on the text with the left mouse button. Press and hold the [SHIFT] key down, then click with the right mouse button on the upper right handle of the object box. Continue to hold the mouse button while you drag the handle upward. Release the mouse button when the desired slant (maximum of 60 degrees) has been achieved. This effect will work at either end, top, or bottom.

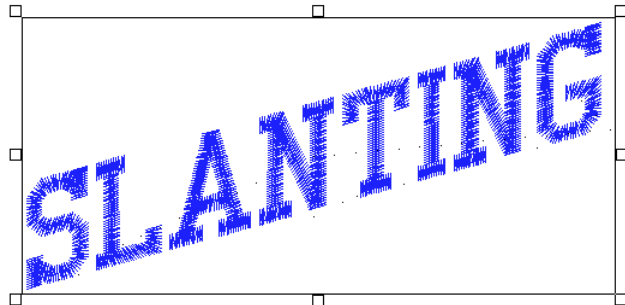


Figure 5-44

Bilinear Stretch

Click on the text with the left mouse button. Press and hold the [CTRL] key down, then click with the right mouse button on the lower left handle of the object box. Continue to hold the mouse button while you drag the handle downward. The object box will stretch on two sides while two sides remain unchanged. This effect will work at either end, top, or bottom.

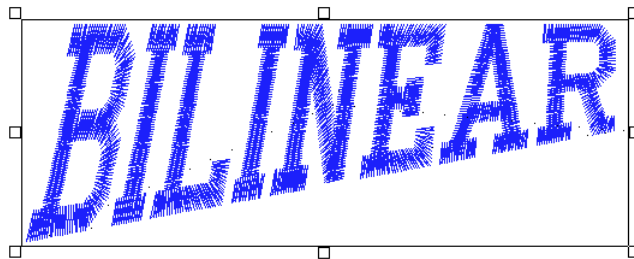



Figure 5-45

Centering Text

The Center Design command recenters your design in the center of your peripheral's sewing field. You can adjust the placement of the design at the peripheral before you begin to sew, but you should **always** perform this step before sending a design.

There are two ways to center the design:

1. Click on Edit→Center Design.
2. Click on the Center Design tool .

Saving Text Designs

To save a design:

1. Click on File→Save As. The Save As dialog box displays as shown in Figure 5-46.
2. Type a name for the design in the Save As File Name box.
3. Select a subdirectory (such as EDS3\DESIGNS) or drive by double-clicking on it in the Directories box. You can move back one level at a time by clicking on [..].

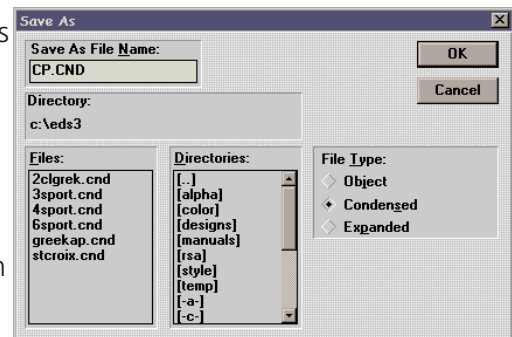


Figure 5-46

Note: If you do not select a subdirectory, your design will be saved in the EDS III main directory (EDS3\).

4. Under File Type, click on Condensed, Object, or Expanded, then click on OK. File types are discussed in later chapters.

The name of your file is now displayed in the EDS III title bar. After the file has been named and saved once, you can resave the file and any modifications by clicking on Save.

Update Alphabets

An **Update Alphas** button has been added to EDS III's Lettering Dialog Box (Figure 5-47). When the **Update Alphas** button is clicked, the list of available alphabets is updated.

This new pushbutton will aid users of AutoFont™. Previously, AutoFont users had to restart EDS III before newly installed alphabets could be seen in the alphabet list.

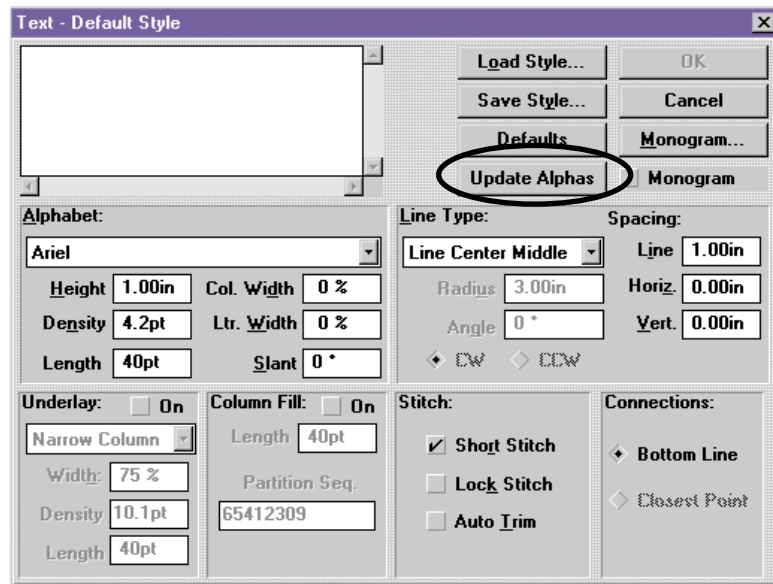



Figure 5-47

6. Monogramming

You can create a monogram in EDS III using either a monogram alphabet or a regular alphabet in Monogram mode. Letters for monograms are entered from the Layout window using the Text tool and dialog box.

Using a Monogram Alphabet

To create a monogram using a monogram alphabet:

1. In a new document, click on the Text tool  to display the text dialog box.
2. Select a Monogram Alphabet (for example, 3 LTR DIAMOND).
3. Type the initials (standard monogramming convention uses first, last, and middle initials in that order).
4. Type in the Height of the center letter. The heights of the other letters are controlled by the monogram alphabet.
5. Adjust the density as needed for the selected height.

Note: Do not click the monogram box when using monogram alphabets. It is used when monogramming with regular lettering alphabets.




Figure 6-1

6. Click on OK to display the monogram (see Figure 6-1).

Using a Regular Alphabet

You can create a monogram using a regular alphabet by following these steps:

1. In a new document, click on the Text tool  to display the text dialog box.
2. Select a regular alphabet.
3. Type the initials (standard monogramming convention uses first, last, and middle initials in that order)
4. Click on Monogram in the upper right quadrant of the Text dialog box, and the Monogram Parameters dialog box displays (Figure 6-2). The numbers 1, 2 and 3 refer to the letters in a monogram. Set number 2, the middle letter, at a height of 2.0 inches. Change the density, if so desired.
5. Click on OK. Now Monogram is checked in the Text dialog box as an indication that you are in the monogram mode and using a regular lettering alphabet.
6. Click on OK to display the monogram.

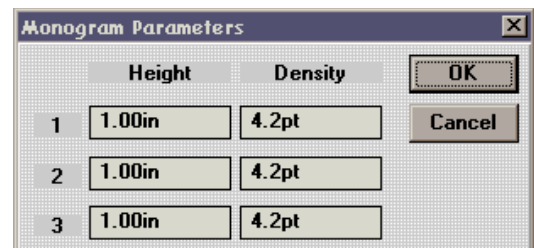


Figure 6-2

Placing A Monogram In A Design

Follow the exercise below to place a monogram in a design:

1. Open a Layout Window with `butrfly.cnd` from the design directory.
2. Click on View→Grid. The grid aids in positioning screen objects. Click on Small (25 x 25) in the Grid dialog box. The grid is displayed with a dot at every 25 embroidery points, in both the X and Y axis.

The next step is to position the monogram inside the loop of the butterfly. First, you will see how to use the Ruler option to measure the loop to know what height to use for the monogram letters.

3. Click on the Ruler tool ; the cursor becomes a ruler with a "+" at the top.

Note: The Status Bar must be active for the Ruler distance to be displayed.

4. Measure the Y (vertical) axis by placing the "+" at the highest point of the loop, then clicking and dragging it to the bottom as shown in Figure 6-3. Use the grid to measure in a straight line. This distance should be about 1.12 inches and displays in the Y = part of the Status Bar.

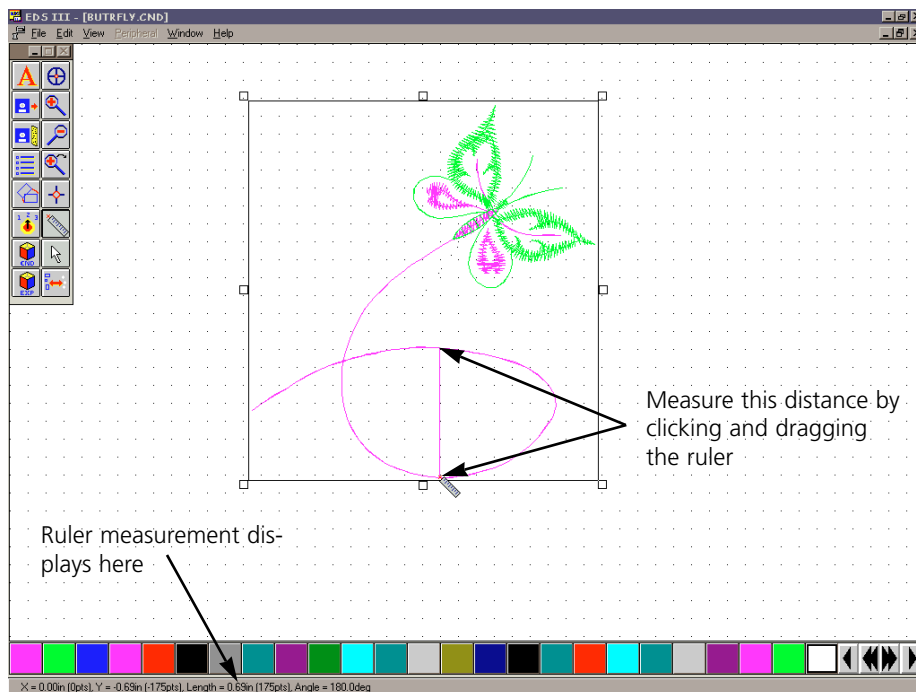


Figure 6-3

5. Click on the Normal Cursor tool to regain a normal cursor.
6. Retrieve the Text dialog box.
7. Click on the 3-LTR POINT monogram alphabet.
8. Enter your initials.
9. Enter 0.75 for Height. This allows for some space around the letters inside the 1.12 inch loop.
10. Click on OK.
11. Click on the monogram displayed in the Layout window and drag it inside the loop of the butterfly as shown in Figure 6-4.

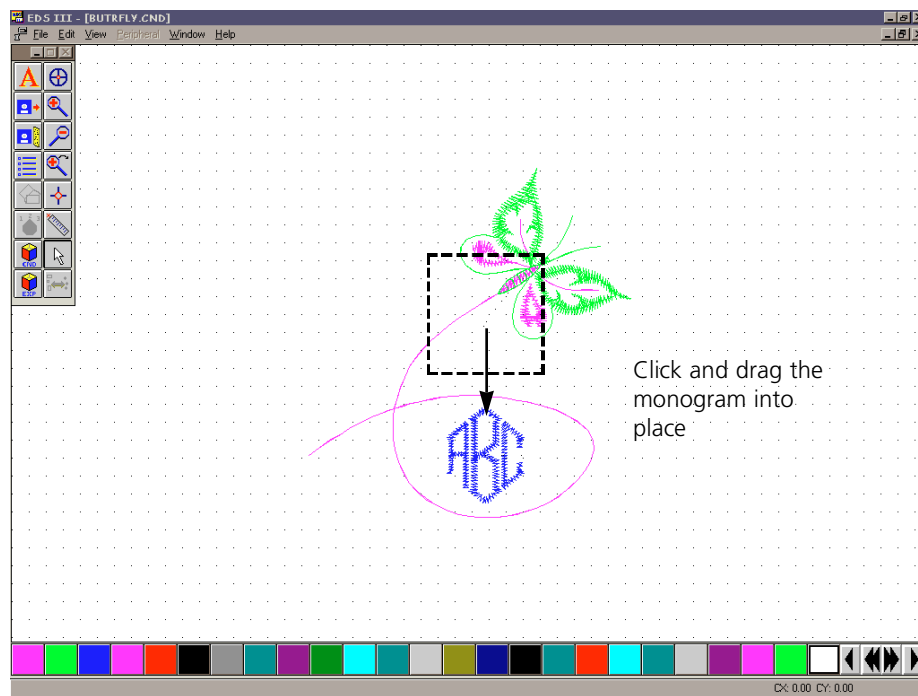


Figure 6-4

12. Click on View→Grid, and remove the Grid by setting it to None.
13. Click on View→Actual size.

Your monogrammed design can now be centered and sewn. You can also save it for later use.

7. Working with Designs

Disks come in a variety of formats, but EDS III considers them either DOS or non-DOS. EDS III can access both formats, but uses different commands for each as shown in the following table:

To perform this operation	Use this command	
	For DOS formats	For non-DOS formats
Load design file into EDS III	Open or Import	Import
Save to hard drive (all files saved on the hard drive are DOS formats)	Save or Save As	N/A
Save to floppy disk	Save, Save As, or Export	Format the disk appropriately, then Export

For more information about non-DOS formats, see Chapter 11.

Opening Design Files

The File Open command enables you to open a DOS file from the hard drive or a DOS-format floppy disk, and you can view the files in two different ways. The first is by name, and the second is by displaying a small picture (also called an icon) of each design.

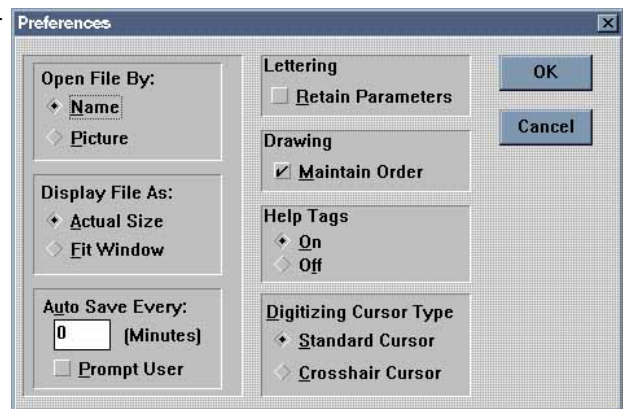


Figure 7-1

To switch from names to pictures (or vice-versa), select your choice in the Preferences dialog box (shown in Figure 7-1). For more information on setting preferences, refer to Chapter 4.

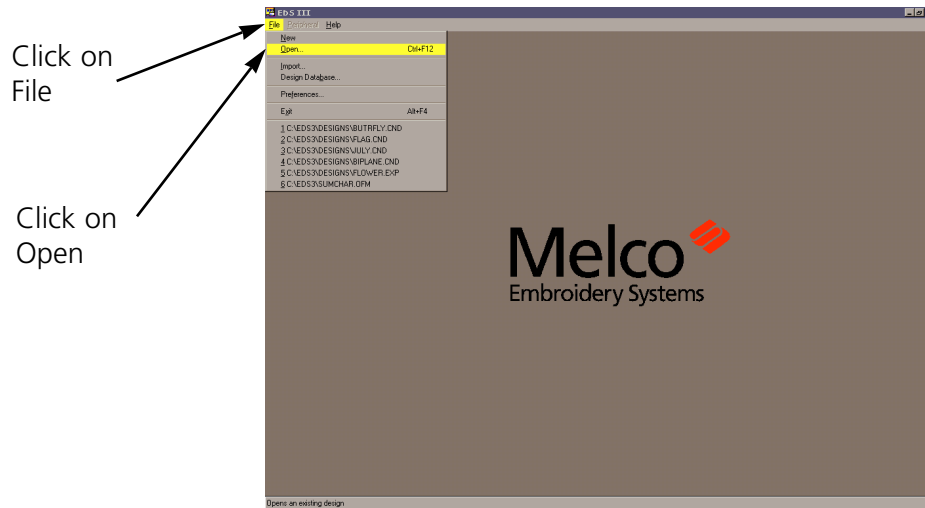


Figure 7-2

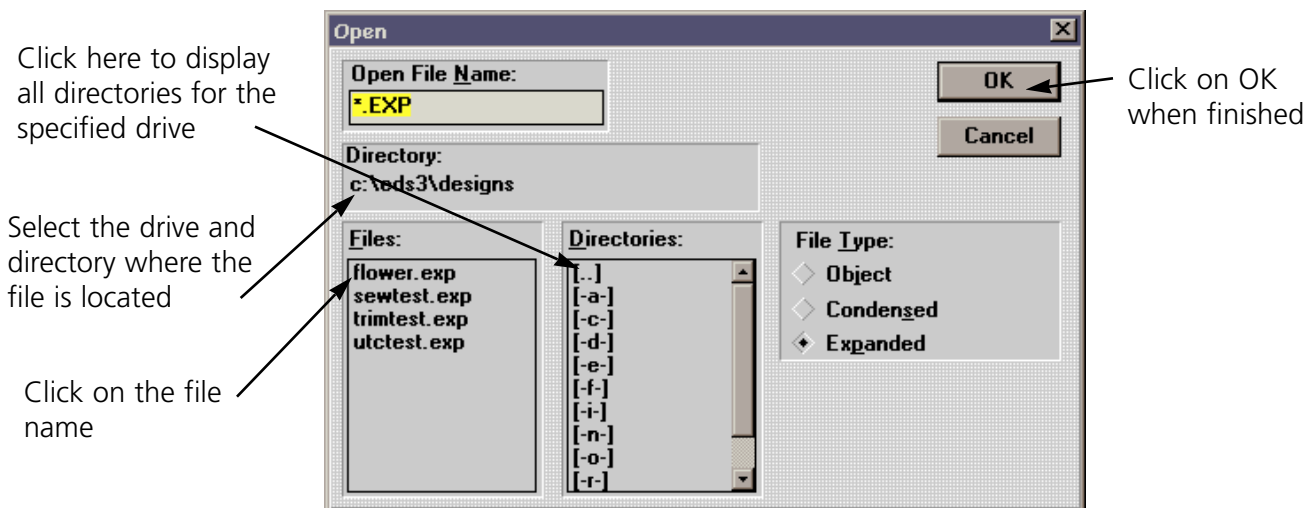


Figure 7-3

File Open by Name

To open a design file by name, refer to Figures 7-2 and 7-3.

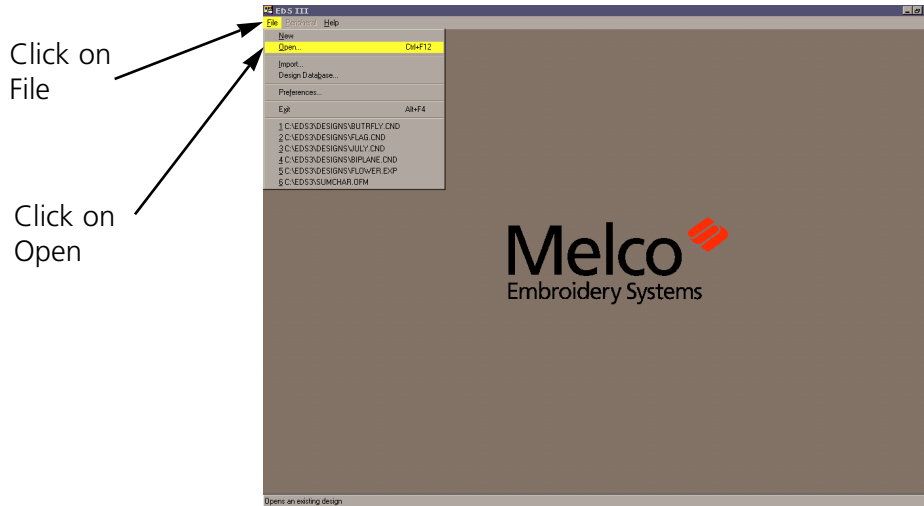
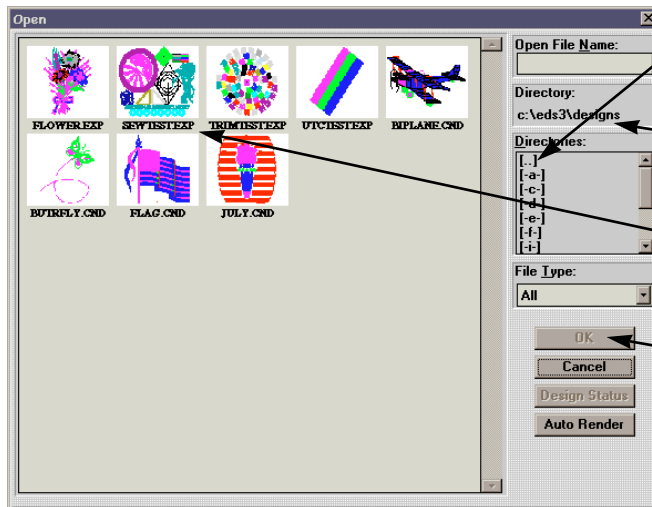


Figure 7-4

File Open by Picture

To open a design file with the picture-based directory, refer to



Click here to display all directories for the specified drive

Select the drive and directory where the file is located

Click on the file picture

Click on OK when finished

Figure 7-5

Figures 7-4 and 7-5.

Note: If no design images are visible, each will appear as a "?". To change "?" to a picture, click on a design, then click on Auto Render to create the selected image. Hold the SHIFT key to select multiple designs; up to nine designs may be selected at one time.

Opening Multiple Design Files

EDS III has the ability to manage multiple design files in a single Layout window. Each design is separate until you save all of them as a single new design. Use the Open

File tool .

Designs as Objects

When EDS III draws a design in the Layout window, that design is referred to as an object. Each object is a separate item and maintains its own sewing attributes. This allows a mixture of expanded and condensed designs in the same window.

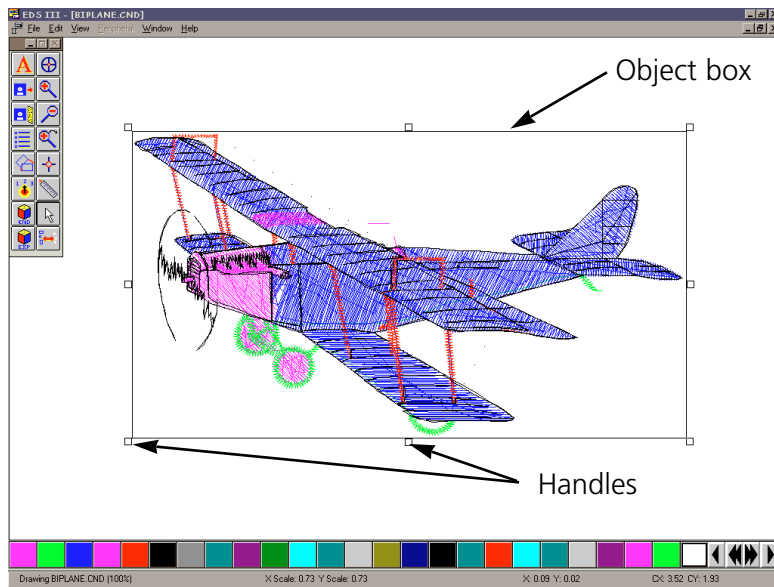


Figure 7-6

Moving Objects In The Window

Click on the object, and a box with handles appears around it. Click and hold the object within the box (not the box handles) using the left mouse button. Drag it clear of the object under it (shown in Figure 7-6). You can move a selected object anywhere in the active area of the window

Using Cut, Copy, Paste, and Clear

The Cut, Copy, Paste, and Clear options are in the Edit menu and can be used with any object in a selection box. The first three options work with the clipboard, which is a temporary memory area.


- Cut** Copies the object to the clipboard and deletes it from the screen.
- Copy** Copies the object to the clipboard but does not delete it from the screen.
- Paste** Copies the contents of the clipboard to the center of the screen.
- Clear** Deletes an object from the screen without copying it to the clipboard. Once an object has been cleared it cannot be recovered unless the file is re-opened without saving the changes.

You can also delete objects by clicking them, then pressing the [DEL] key on the keyboard. Like with "clear", objects that have been removed with [DEL] cannot be recovered unless the file is re-opened without saving the changes.

Cut, Copy, and Paste are useful for adding, combining, and removing objects to and from designs.

Rotating Objects

Objects may be rotated in two ways:

- Graphically in the Layout window
- Numerically from the dialog box that appears when you click on the Object Parameters tool .

To rotate an object in the layout window, click on the object and drag handles appear. Click again and the handles turn into arrows (Figure 7-7). Click on a corner of the design with the left mouse button and drag to rotate the design. The status bar displays the degree of rotation.

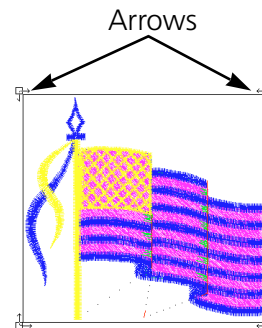


Figure 7-7

Click here to lock an object; a locked object may not be moved or scaled

Enter the degree of rotation here; positive values rotate objects counter-clockwise and negative values rotate the object clockwise.

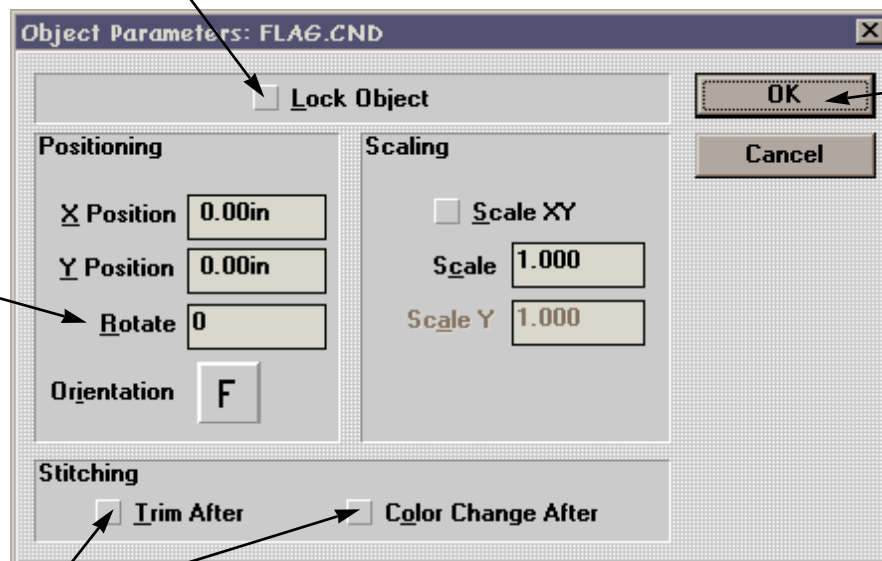



Figure 7-8

Click on OK

Click to insert a trim or color change command after an object when working with multiple object designs.

To rotate an object using the dialog box, click on the Object parameters tool . Refer to Figure 7-8 for instructions.

Changing the Orientation of a Design

Sometimes design orientation must be altered for proper results. Figure 7-9 shows the various orientations available.




Figure 7-9

To change orientation, refer to these instructions.

1. Click on the Object Parameters tool to display its dialog box.
2. Click on the **F** under Orientation until the desired orientation displays.
3. Click on OK.

Object Sewing Order

Click on the Object Order tool  to display the Object Order dialog box. The dialog box displays the sewing order of any objects in the design. Refer to Figure 7-10.

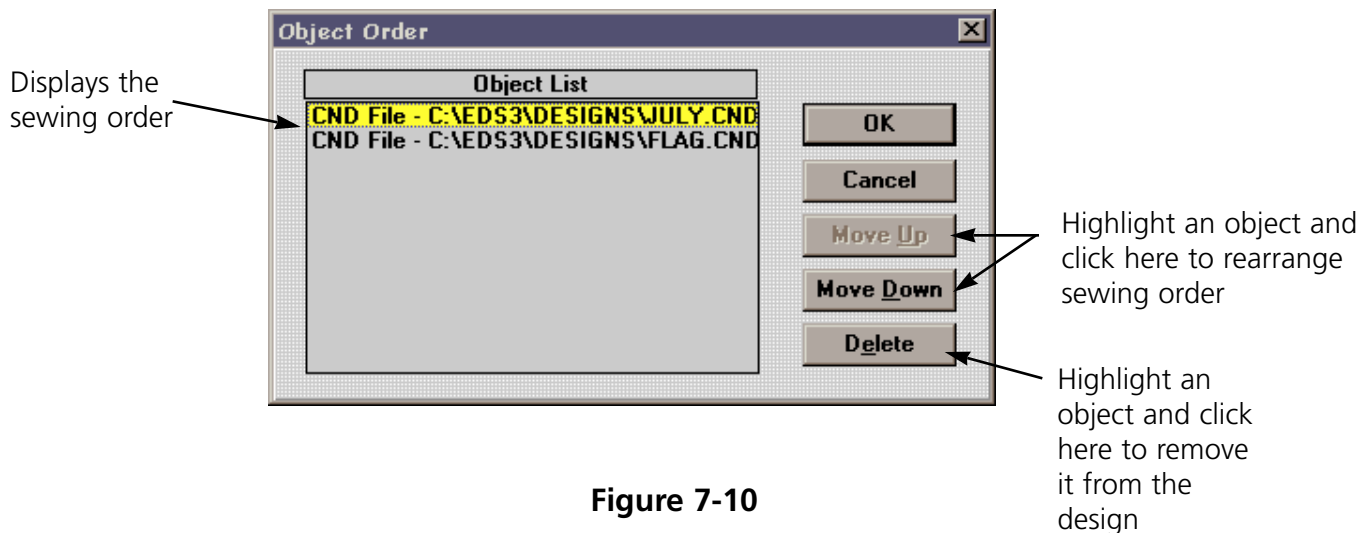


Figure 7-10

Deleting an Object

EDS III offers the flexibility to delete an object in three different ways:

The Layout Window

1. Click on the object.
2. Press [DEL] on the keyboard.

The Menu Bar

1. Click on the object.
2. Click on Edit in the Menu Bar.
3. Click on Clear.

The Object Order Dialog Box

1. In the Object Order dialog box, click on the object name you wish to delete.
2. Click on Delete.
3. Click on OK.

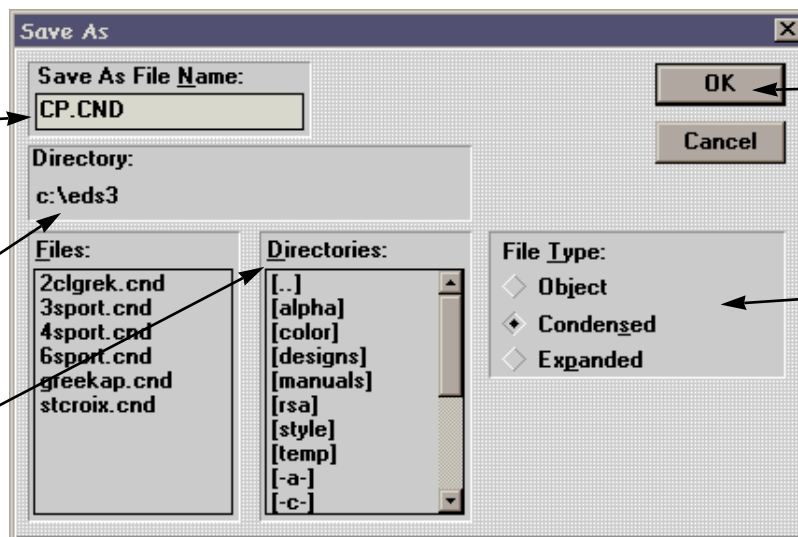
Saving a Design

Designs can be saved to the hard drive or a floppy disk by clicking on File@Save As to display the Save As dialog box (Figure 7-11).

Type the desired file name here (only letters or numbers are permitted)

This is the path name of where the file will be saved

Use the directory area to change the path name if desired



When finished, click here


Select file type here

Figure 7-11

Modifying Condensed Designs

EDS III allows you to modify the way a condensed design sews. This applies to CND files or condensed objects in OFM files.

Follow these steps to modify a condensed design:

1. Load a Condensed (CND) file into the Layout window.
2. Click on the object. A box appears around the object and the Adjust tool  becomes highlighted. Click on the Adjust tool to display the Adjust dialog box (Figure 7-12).

Adjust length of running stitches here

Set column density and width here (refer to Chapter 5)

Turns underlays on or off and sets parameters (refer to Chapter 5)

Sets the max length of a stitch before it triggers a jump stitch

Turns short stitches on or off (refer to Chapter 5)

Turns lock stitches on or off (refer to Chapter 5)

Click here when finished

Resets all options to EDS III defaults

Allows changes to scaling (relative proportions) of a design's density, stitch length, fill density (if applicable) and fill stitch length (if applicable)

Figure 7-12

This dialog box allows you to make some basic changes to condensed designs. If the changes you need to make are not permitted here, EDS III Editing may be required. Contact your sales representative for more information.

Design Notes

This feature allows you to add notes to any Object (OFM) file.

Note: This option only works with Object files. It will not work with Expanded or Condensed files.

To access the notes feature, click on File→Notes. The Notes dialog box (Figure 7-13) appears.

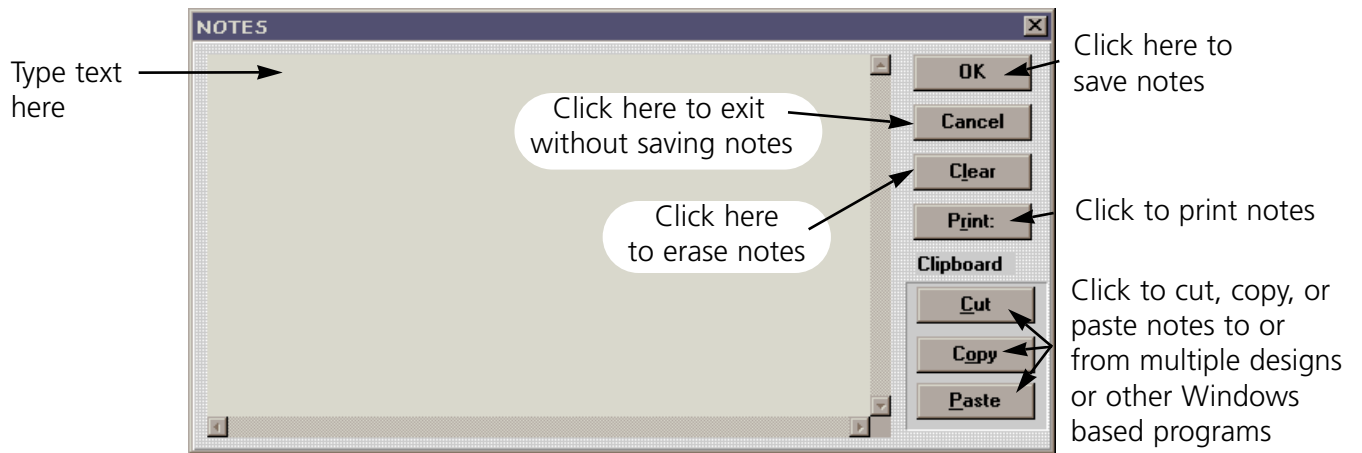


Figure 7-13

Print

This feature allows you to print information about the currently loaded design to a connected printer. To access this option click on File→Print. The Print dialog box (Figure 7-14) appears.

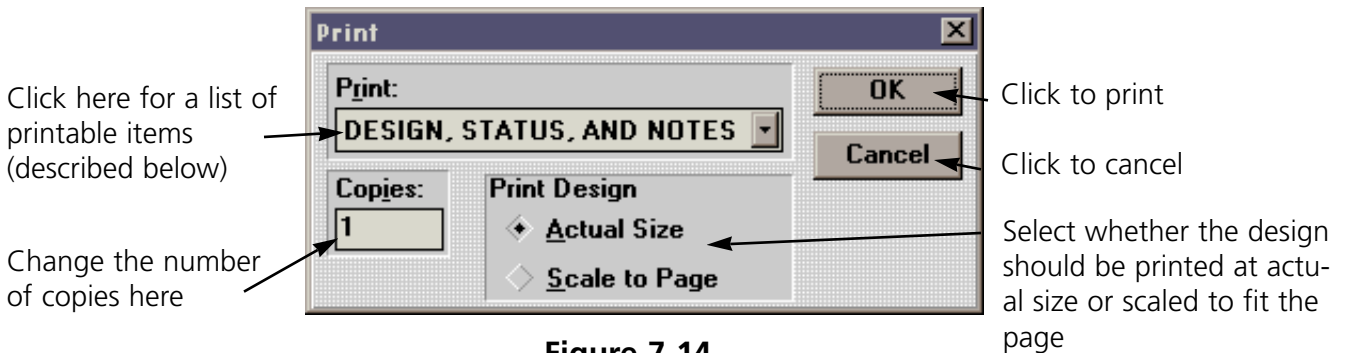


Figure 7-14

Design, Status, and Notes prints the current design, status, and any notes associated with the design.

Print Design prints the current design as shown on-screen.

Object List prints the name of all objects within the current design, their location, and orientation.

Design Status prints the size, location, and number of stitches (total stitches and total for each color), and other information for the current design.

Notes prints the notes associated with the current design.

Paper Orientation

1. From the menu bar, click on File→Printer Setup.
2. When the Printer Setup dialog box appears, click on Setup. This brings up the standard Windows Printer Setup dialog box (which can also be accessed in the Windows Control Panel).
3. In the upper right area of the dialog box is a field labeled Orientation. It features a small drawing of a sheet of paper with the letter "A". Next to the sheet of paper are two buttons, one labeled Portrait and the other Landscape.
4. Click on the desired orientation.
5. Click on OK to accept the changes or Cancel to not accept. Either choice returns you to the EDS III Printer Setup dialog box.
6. Click on OK to accept the new printer setup, or Cancel to not accept. Either choice will return you to the Layout window and the current design.

8. Scaling Designs

Condensed designs can be increased in scale by up to a factor of three and reduced by as much as a factor of 0.2. Perform a test sewout if you dramatically change a design's scale to make sure it embroiders well.


Rescaling an expanded design by more than 20% requires editing the stitch lengths and fill densities, accomplished with the Stitch Processor Option (sold separately).

Rescaling a condensed design adds or subtracts stitches to or from the design. Rescaling an expanded design (without the stitch processor) does not.

Scaling a Condensed Design

Condensed designs may be scaled in two ways:

- Graphically in the Layout window
- Numerically from the dialog box that appears when you click on the Object Parameters

tool .

Layout Window

To scale an object in the layout window, click on the object and drag handles appear (Figure 8-1). Click on a corner of the design with the left mouse button and drag to scale the design. The status bar displays the new relative proportions. If arrows appear, click again to get the boxes.



Watch the status bar while scaling; the status bar displays the scaling amount.

Tip

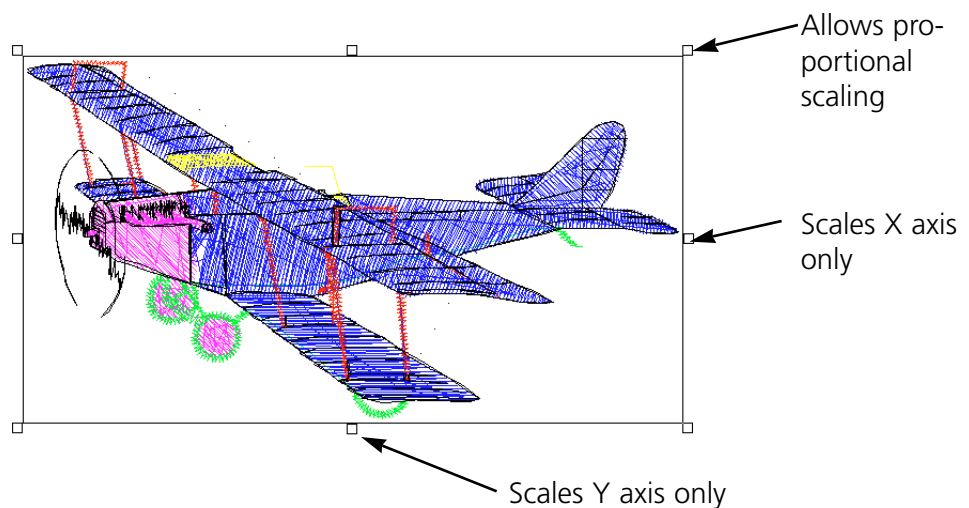



Figure 8-1

To scale an object using the dialog box, select the design by clicking on it, then click on the Object parameters tool . Refer to Figure 8-2 for instructions.

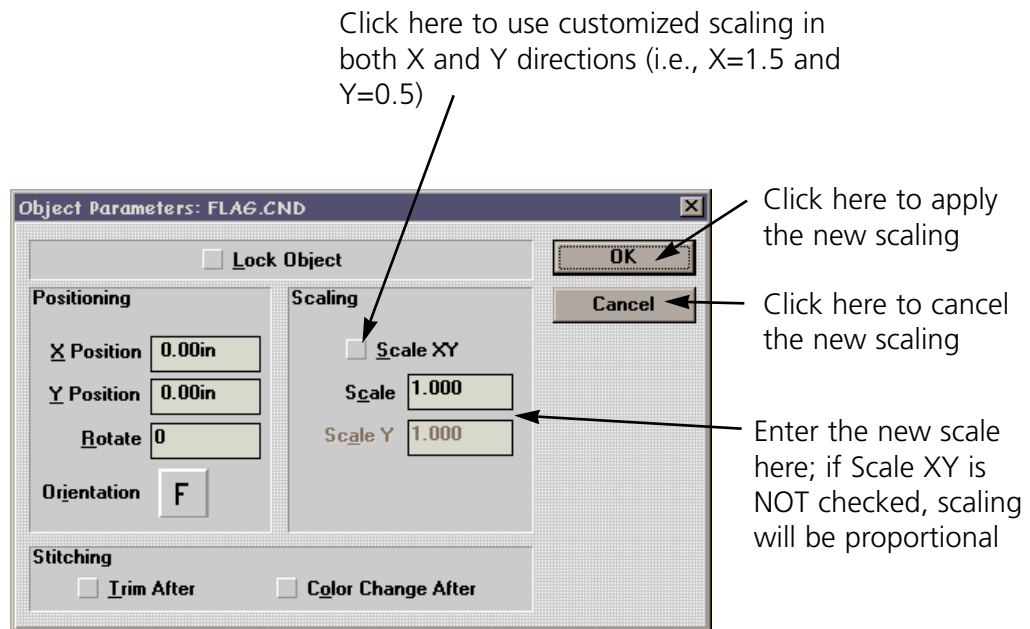


Figure 8-2

Scaling an Expanded Design

To scale an expanded design less than 20%, follow the same procedures outlined in Scaling Condensed Designs.

Stitch Processor

Scaling expanded designs more than 20% up or down requires the use of the Stitch Processor option to edit stitch lengths, column densities, and fill densities. The Stitch Processor is an option for controlling Expanded design scaling. It is not included with the basic EDS III system. If you purchased this option, it will be displayed in bold in the Edit drop-down menu when an expanded design is selected on the screen.

Click on Edit→Stitch Processor to display the Stitch Processor dialog box (Figure 8-3).

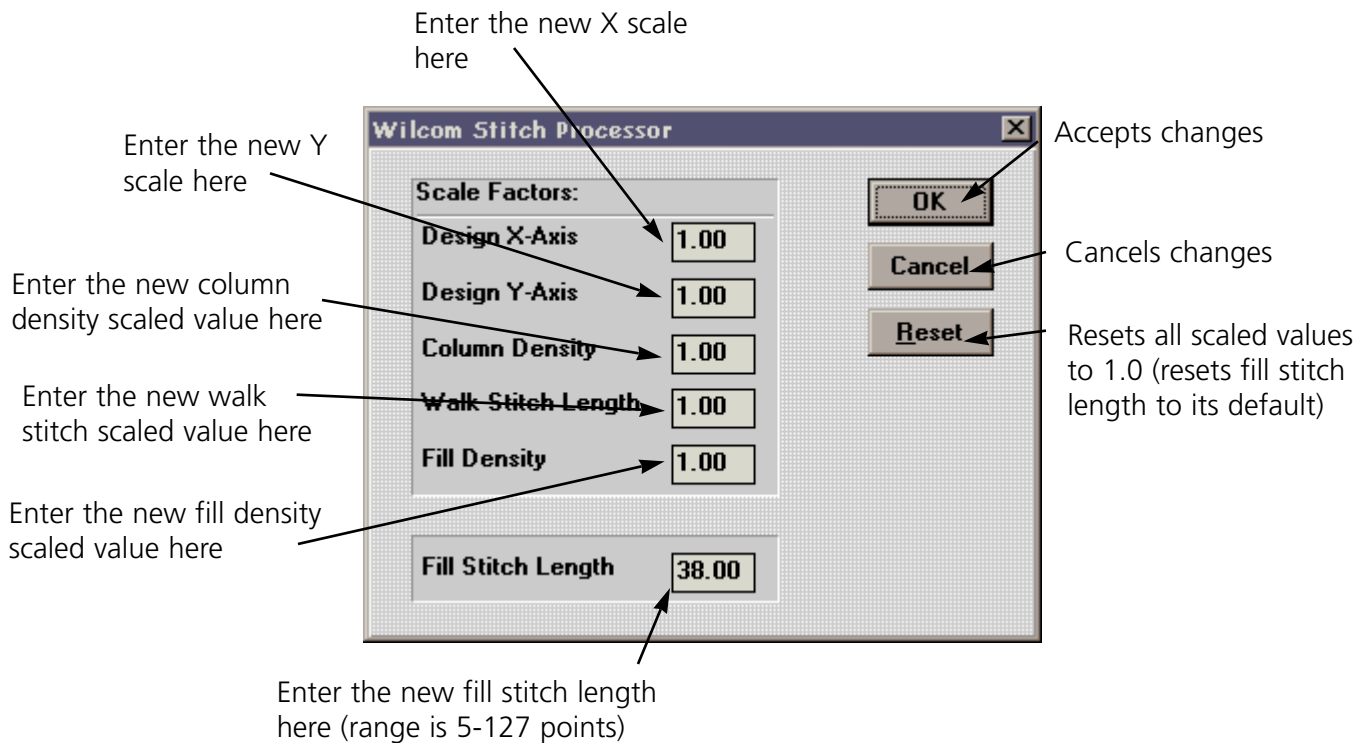


Figure 8-3

If you increase the size of a design, the Stitch Processor automatically:

- Uses a number smaller than 1.000 for the Column Density
- Uses a number smaller than 1.000 for the Fill Density.

If you decrease the size of the design, the Stitch Processor automatically:

- Uses a number larger than 1.000 for the Column Density
- Uses a number larger than 1.000 for the Fill Density.

The Stitch Processor allows you to change the density of a design even if the scale is not changed. Slight changes in density may help fine-tune a design.

Walk and Fill Stitch Lengths

The Stitch Processor automatically scales the stitch lengths when a design is rescaled. However, you may also apply manual scale factors to the walk stitch and fill stitch lengths as you rescale a design.

9. Step and Repeat

The Step and Repeat function is ideal for patches and emblems, allowing you to repeat one or more designs up to 81 times. The number of repeats is controlled by the Columns Count (the number of vertical copies) and the Row Count (the number of horizontal copies). The maximum number for either columns or rows is 9, with a matrix of 9 horizontal copies by 9 vertical copies.

Click on Edit→Step and Repeat to display the Step and Repeat dialog box (Figure 9-1).

The Columns Distance determines the horizontal distance between copies of the design. The value entered here should be the width of one copy of the design, **plus** the distance desired between copies. For example, if the design is three inches wide, and you want one inch between copies, you would enter a Columns Distance of 4.0 inches.

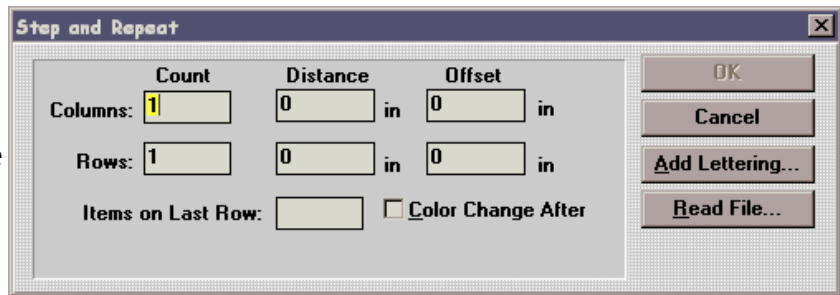


Figure 9-1

The Rows Distance determines the vertical distance between copies of the design. The value entered here should be the height of one copy of the design, **plus** the distance desired between copies. For example, if the design is two inches high, and you want half an inch between each copy, you would enter a Rows Distance of 2.50 inches.

Note: If you have selected Metric Units within Windows, all distances expressed within EDS III will be displayed in metric values.

Remember:

- Designs may overlap without causing sewout errors.
- The designs are precisely repeated at the specified distances, with the first design remaining in its original place.
- When you Step and Repeat a design, all of the details are copied with it, including any color changes.

Note: If a design has several color changes, and does not end with a color change, the repeated designs will not sew out correctly. Be sure to check the **color change after** box on the first object in the Object Parameters dialog box if a design does not end with a color change.

If Step and Repeat is used and you do not get the desired result, you must delete all the objects and start over. If you do not, you will get double the desired quantity of objects.

Adding Text

To place text with each design, use the Add Lettering feature. Make sure none of the designs on-screen have an object box around them (click the mouse on any blank area of the layout window to deselect).

1. Click on Edit→Step and Repeat. The Step and Repeat dialog box appears with the Count and Distance values still in place from the original design.
2. Click on the Offset box for Rows. Enter the design's height **plus** the distance desired between the text and the design (if the design is 2" high and you want the text to appear 0.5" below the design, enter 2.5 for the offset value).
3. Click on Add Lettering. The Text dialog box appears.
4. Type in the names with **\$** between each name (see Figure 9-2).
5. Select the desired text parameters (height, alphabet, etc.).



Figure 9-2

The text is generated below the designs and displayed using the color of the next needle. You can change colors within the text itself, as well (see Chapter 5 for more information).

To use an ASCII text file with Step and Repeat, follow these steps:

1. Click on Read File in the Step and Repeat dialog box to display the Read File dialog box (Figure 9-3).
2. Enter the complete file and path name of the text file.
3. Click on OK.

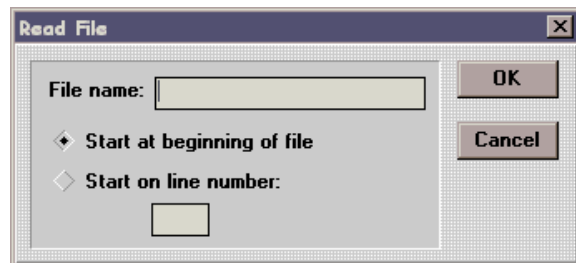


Figure 9-3

4. The text dialog box will appear with the names listed in the editing window. Choose the letter height and style.
5. Click on OK. The names will appear below the repeated designs.

10. Using the Color Palette

EDS III allows you to choose the colors used to draw your designs on the screen. When the palette bar display is on as shown in Figure 10-1, the colors are shown at the bottom of the Layout window. By changing these colors, you get a preview of a sewn garment.

EDS III begins drawing with the first color in the palette bar and moves once to the right each time a color-change command is encountered. EDS III refers to the colors as "Needle 1", "Needle 2", etc., but they do not control which needles are used at the sewing peripheral.

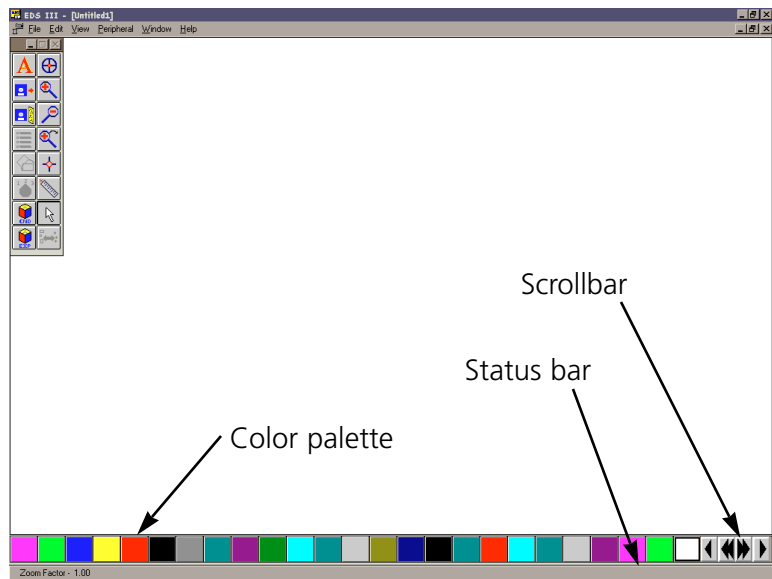


Figure 10-1

99 needles are available in the color palette bar and are displayed 24 at a time. The scroll buttons on the right end of the bar allow you to move forward or backward, one needle at a time or 24 needles at a time. The screen background color is permanently located in the last, outlined box on the right end. The screen color can be changed the same way you control the needle colors.

Displaying the Palette Bar

To turn the palette bar display on or off, click on View→Palette. The Named Palette dialog box (Figure 10-2) displays.

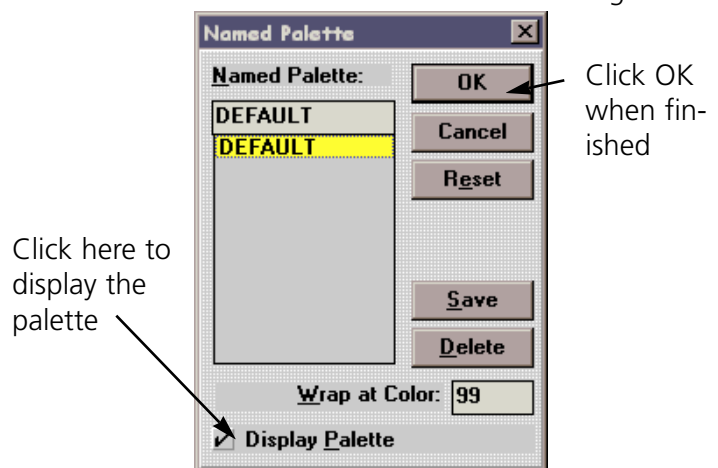


Figure 10-2

Working with the Palette Bar

In the Layout window, double click any colored square (called "needles") to display the Needle dialog box (Figure 10-3).

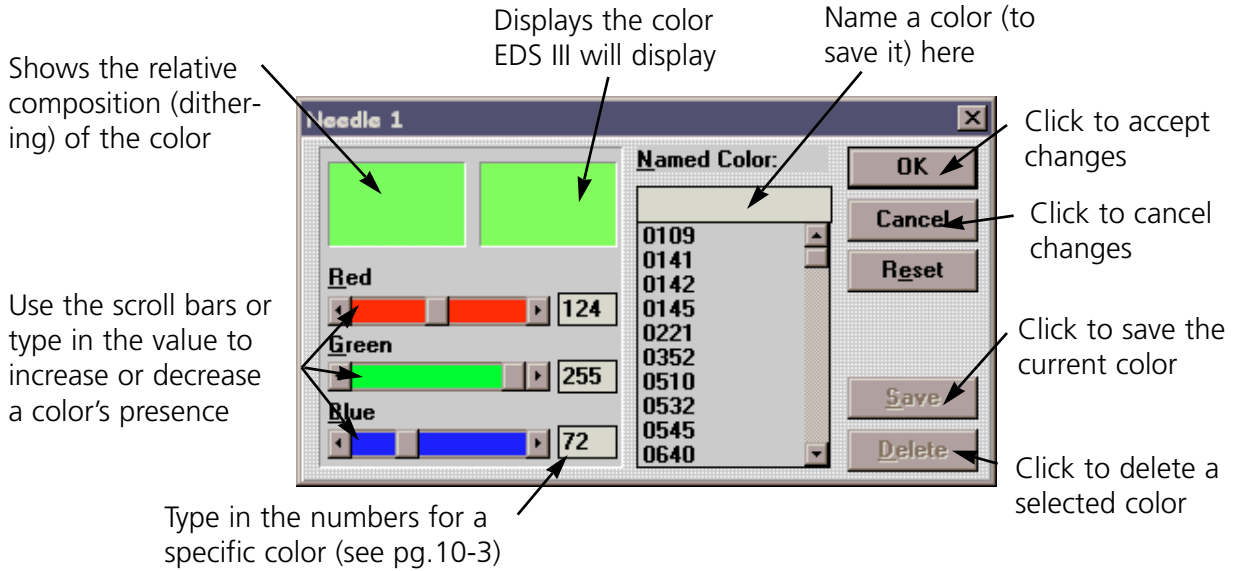


Figure 10-3

Note: Once you change a color, you must click on View→Regenerate to see the change.

Working with Palettes

You can also save an entire palette of colors. To save a palette of colors click on View→Palette. The Named Palette dialog box (Figure 10-4) displays.

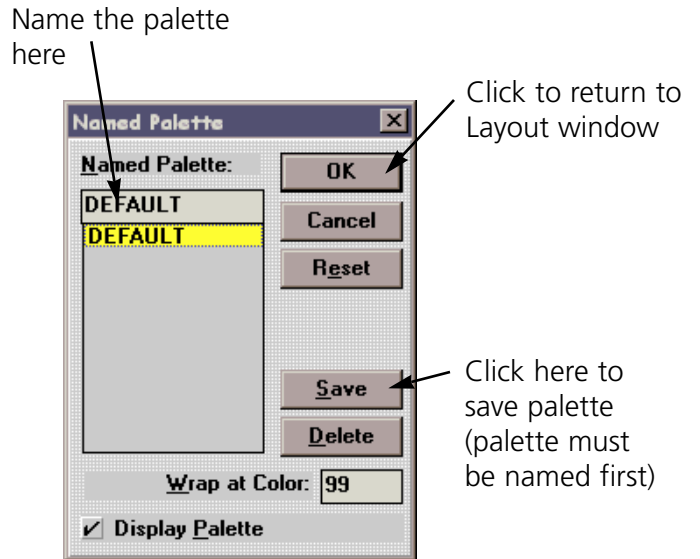


Figure 10-4

Using the Saved Palette

1. Click on View→Palette.
2. In the Named Palette dialog box, click on the desired palette name.
3. Click OK.

Wrap at Color

The Wrap at Color option determines how many colors are used before starting over with Needle 1. You may not want to set colors for all 99 needles.

1. In the Wrap at Color box, enter the last needle to use before starting over with needle 1. This will not affect the sewout.
2. Click OK.

Color Information

The Red, Green, and Blue color values are in a range of 0 to 255. To see these colors on a 16-color monitor, enter their numerical values in the needle dialog box.

Note: When you save a design as an object file (OFM), the color palette will be saved with the design.

Red	Red - 255	Green - 0	Blue - 0
Green	Red - 0	Green - 255	Blue - 0
Blue	Red - 0	Green - 0	Blue - 255
Yellow	Red - 255	Green - 255	Blue - 0
Magenta	Red - 0	Green - 255	Blue - 255
Cyan	Red - 255	Green - 0	Blue - 255
Reddish Brown	Red - 128	Green - 0	Blue - 0
Darker Green	Red - 0	Green - 128	Blue - 0
Darker Blue (Navy)	Red - 0	Green - 0	Blue - 128
Ocher (Pale Yellow)	Red - 128	Green - 128	Blue - 0
Turquoise	Red - 0	Green - 128	Blue - 128
Violet	Red - 128	Green - 0	Blue - 128
White	Red - 255	Green - 255	Blue - 255
Gray	Red - 128	Green - 128	Blue - 128
Light Gray	Red - 192	Green - 192	Blue - 192
Black	Red - 0	Green - 0	Blue - 0

11. Using Import and Export

Some of the designs you work with may be on a floppy disk. EDS III is compatible with DOS, Melco, Premier, Tajima, Barudan FDR and FMC, and ZSK disks, all of which have unique formats. The following chart outlines when to use each command.

To perform this operation	Use this command	
	For DOS formats	For non-DOS formats
Load design file into EDS III	Open or Import	Import
Save to hard drive (all files saved on the hard drive are DOS formats)	Save or Save As	N/A
Save to floppy disk	Save, Save As, or Export	Format the disk appropriately, then Export

Importing a Design

To import a design, click on the Import Design tool  or click on File→Import. The Import dialog box (Figure 11-1) displays.

The normal process for importing a design is indicated with numbered steps in Figure 11-1.

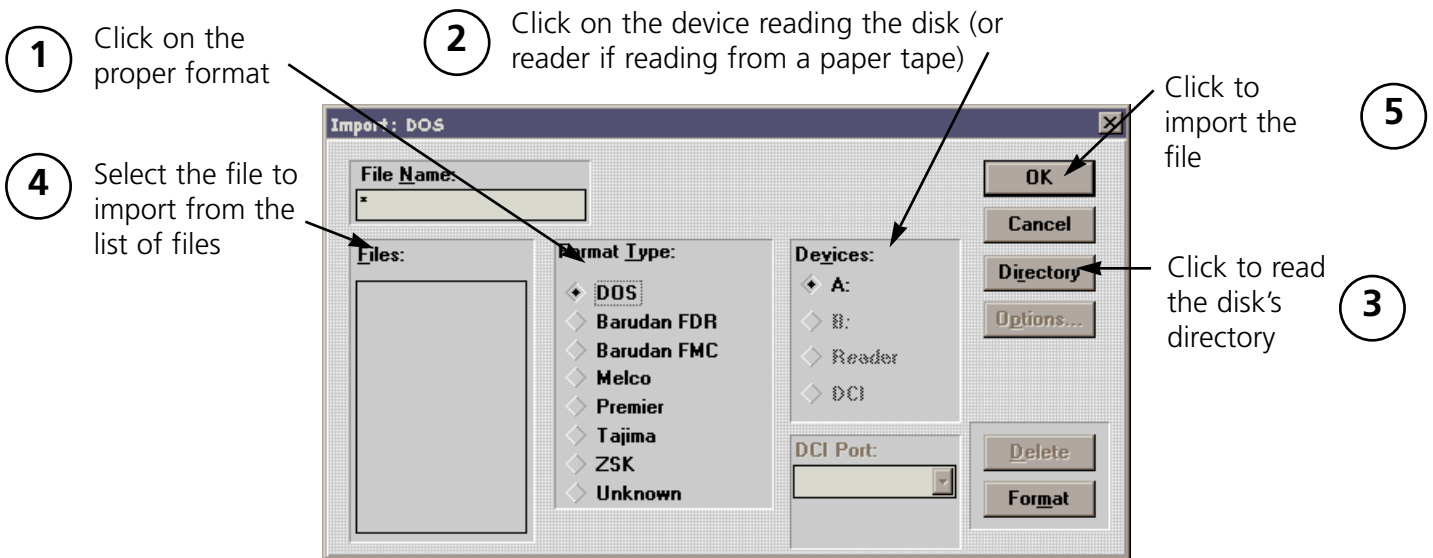



Figure 11-1

Note: If you click on the Options button while working with a Tajima format disk, a message box will ask you if you want to update the Boot Record of the disk. This refers to some Tajima disks that have an improper internal label and cannot be read by a DOS computer. If you have problems loading a Tajima disk, click on the Options button and respond **Yes** to the message.

Working with Multiple Designs

EDS III has the ability to manage multiple design files in one Layout window. Once they are in the same Layout window, they can be sewn and/or saved as a single new design. Using the Import tool in the Layout window is one way to load an additional design file.

1. Import or Open a file into the Layout window.
2. Click on the Import tool  to display the Import dialog box.
3. Import a design from a disk to combine both designs in the same Layout window.

Special Considerations for Importing Designs

Imported designs may not embroider as expected due to the differences in machine functions and punching techniques utilized for different machine types. If unusual situations are discovered after importing a design, you may need to edit some of the machine function commands such as color changes, trims, etc. Refer to the Editing and Digitizing manual for more information about editing designs.

Formatting

Disks must be formatted to match the file type before a file can be written to it. You can format the disk from the Export or Import dialog box. Follow these steps to format a disk:

1. Click on File→Import or File→Export to display the Import or Export dialog box (Figure 11-2).
2. Select the correct format.
3. Select the correct device.
4. Click on Format to format the disk.

Note: Melco is the only format that can use a 5.25" disk and can only format disks to 200K.

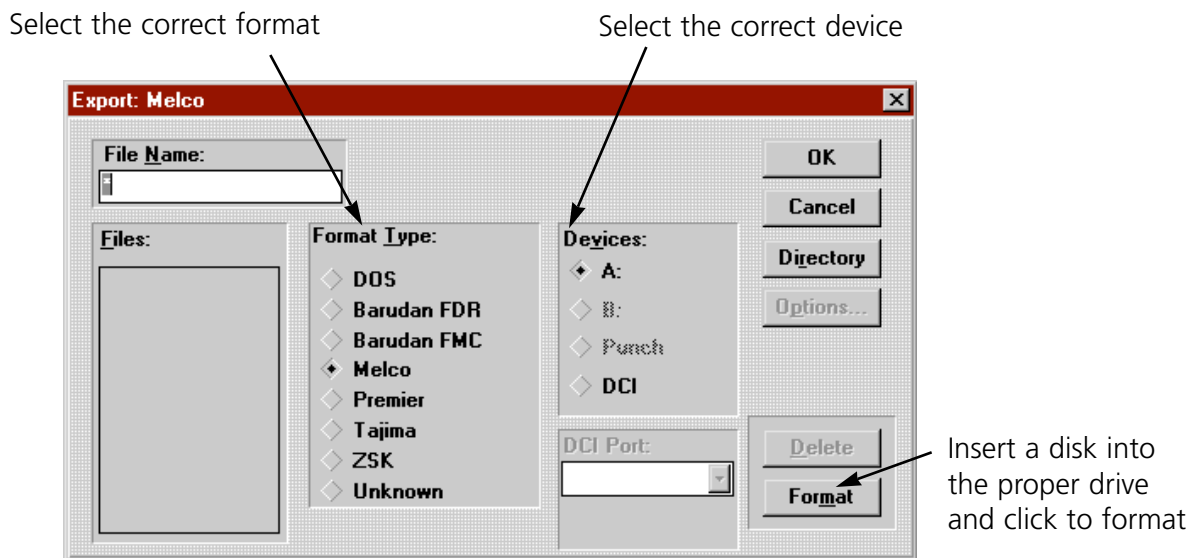


Figure 11-2

Important Information on the Melco Format

The Melco format was developed to work with early Melco embroidery machines and other older embroidery products. Hardware required to read the Melco format is becoming increasingly difficult for Melco's suppliers to provide. Therefore, Melco cannot guarantee that it will be able to support the Melco format in the future.

Melco recommends exporting designs in the Melco format **ONLY** when the equipment sewing the design requires the Melco format. Otherwise, save designs in the DOS format or the format associated with your particular embroidery product.

Other embroidery formats supported by EDS III are not affected by this situation.

Exporting a Design

Remember, a disk must be of the proper format before you can export a design to it.

Click on File→ Export to display the Export dialog box (Figure 11-4).

Note: If you are unsure of the format, click on Unknown, then on the Directory button. EDS III will determine the format of the disk and make the selection for you. If you selected a Format Type that does not match the format of the disk, the error message shown in Figure 11-3 will be displayed. If you are still unsure of the disk's format, click on Unknown.

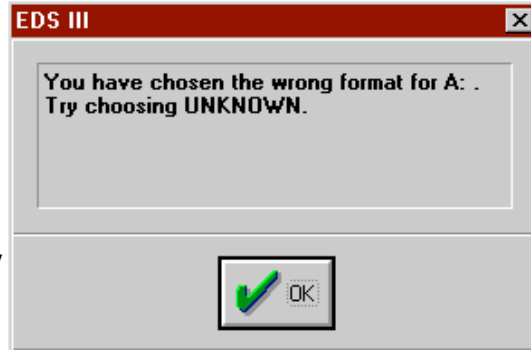


Figure 11-3

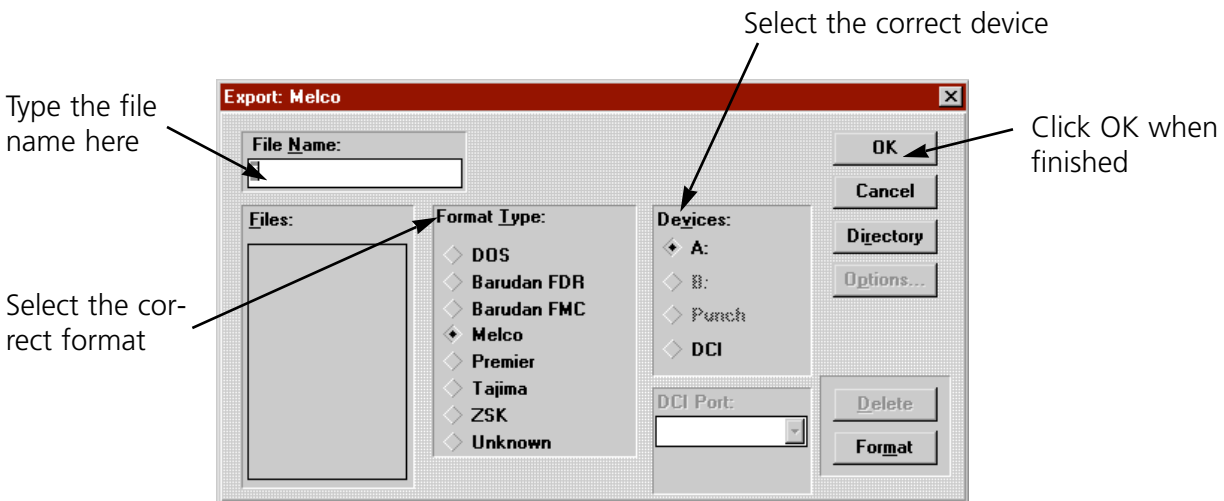


Figure 11-4

File Name Standards

The filename conventions for floppy disk formats are given below. These rules must be followed for the disk to be read by other systems:

DOS Format

DOS format names consist of a 1-8 character filename and one of the following extensions:

- .CND - Condensed Format
- .EXP - Expanded Format
- .OFM - Object (Layout format)

Barudan FDR Format

Barudan FDR uses a numeric format. The file number can be from 1 to 36. In addition, a label of up to 8 characters may be specified with this file number. The number and the label must be separated by a colon.

Examples:

- 3
- 26:SNAIL

Barudan FMC Format

Barudan FMC uses a numeric format. The file number can be from 1 to 36. No character labels are allowed.

Examples:

- 3
- 26

Melco Format

MELCO format names consist of a 1-6 character filename and one of the following extensions:

- .CND - Condensed Format
- .EXP - Expanded Format

Premier/Stellar Format

The PREMIER/STELLAR format uses the Indirect mode of specifying file names (see your Premier or Steller manual for a description of Indirect mode). In general, you can think of a Premier/Stellar filename as a number between 1001 and 1999.

Examples:

1001

1930

The Options button allows you to specify 5 different sizes for the hardware scaling of the design at sewout time. The defaults are:

Smallest:	50%
Smaller:	75%
Larger:	125%
Largest:	150%

Enter new sizes as a ratio to 1.00, for example 125% is entered as 1.25

Note: The Stellar 1 can only read files saved in this format. The Premier can read Tajima and DOS (.EXP) files as well.

For additional information on Premier/Steller formatting (relating to digitizing and datastitch standards) refer to the Editing and Digitizing in EDS III manual.

Tajima Format

Tajima format uses a numeric format with numbers ranging from 1-999. Beginning with EDS III release 1.32, any 1-8 character name is also supported. In addition to a filename, a 1-8 character label can be specified after the filename and separated by a colon (like the Barudan FDR format.)

Examples:

1

G001 (How the old Tajima format stored the name 1)

1:TEST

APPLE:TEST (The new Tajima Format)

ZSK Format

Zsk format uses a numeric format with numbers ranging from 1-999.

Examples:

1

12

234

12. Tiling & Cascading Windows

Tile

Tiling in EDS III allows you to view up to nine Layout windows. After you have opened several designs, click on Window→Tile. The screen is divided into equal partitions, one for each open window (Figure 12-1).

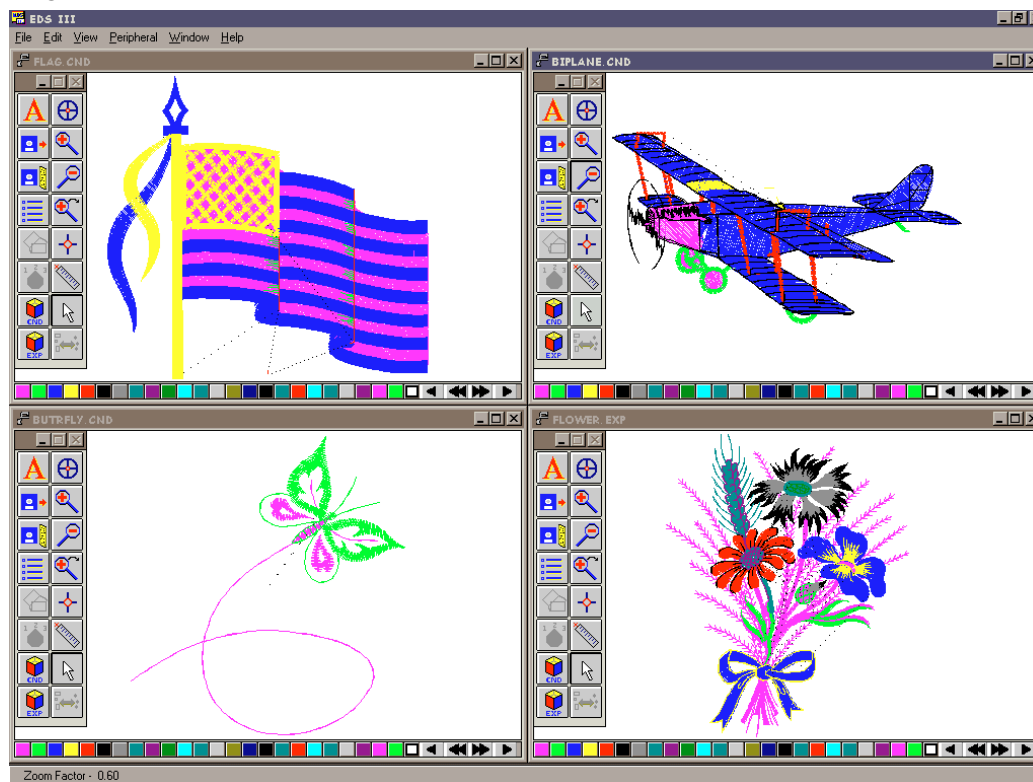


Figure 12-1

When you tile your design windows, they all share the same Layout window menu bar, but each has its own toolbar. Clicking on a design window title bar makes it the current window, highlights the title, and activates the toolbar.

To fit the design within the smaller window size, click on View→Fit Window.

Repeat the process by clicking on another window's title bar, clicking on View→Fit Window until all designs are visible.

To close the windows, click on Window→Close All.

Cascade

An alternative to Tiling multiple windows is the Cascade display shown in Figure 12-2. Access Cascade by clicking on Window→Cascade.

Clicking on a visible part of any window brings it to the front and makes it the current window.

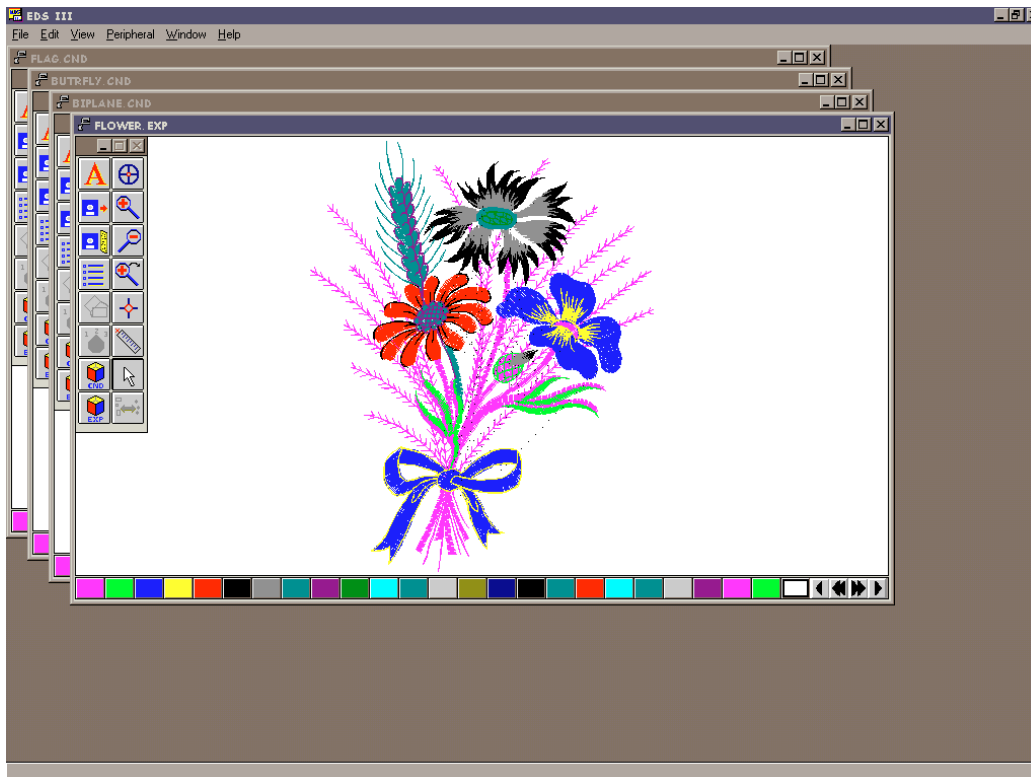


Figure 12-2

To close the cascaded windows, click on Windows, followed by Close All.

Cut, Copy, and Paste

Multiple windows makes the Edit options Cut, Copy, and Paste available to copy or move objects from one window to another.

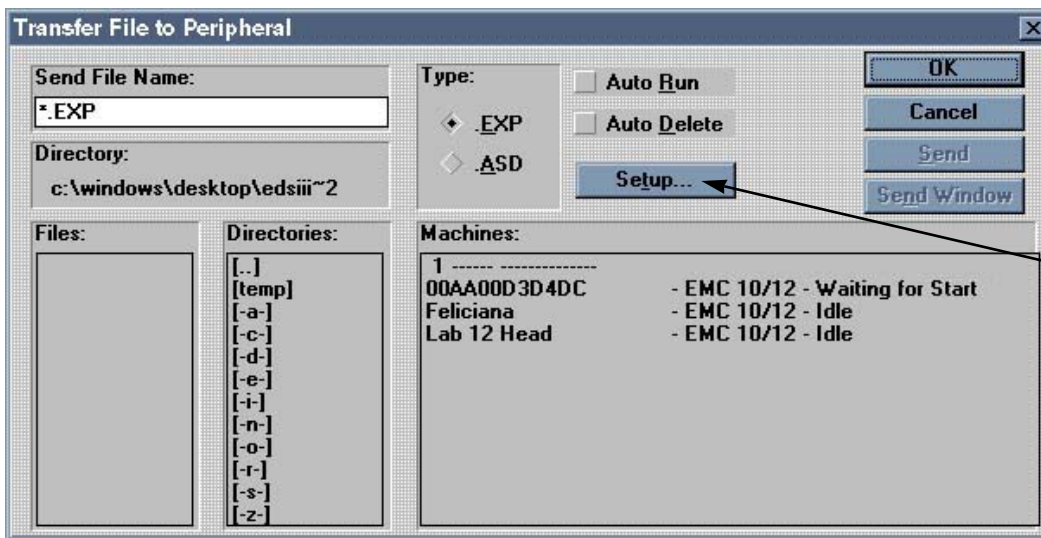
To do this, open several windows and tile or cascade them. Select an object in the active window, click on Edit, then Cut or Copy. Highlight the target window, click on Edit→Paste to paste the object into the new window.

13. Working with Peripherals

Enabling a StarLAN Peripheral

StarLAN peripheral(s) must be enabled before a design is sent. To enable the peripheral, Click on File→Transfer to display the Transfer dialog box (Figure 13-1).

Note: If you are operating an Ethernet EMC 10/12, it does NOT need to be enabled.



Click here to display the Peripheral Setup dialog box (Figure 13-2).

Figure 13-1

Before sending a design to the peripheral, make sure the following apply:

- The computer network cable is connected to the peripheral.
- The peripheral's power is ON.
- The peripheral software is downloaded.

Note: The peripheral MUST be set to the same number. Refer to the machine Operator manual for information on how to properly configure the machine.

Click on the peripheral number to enable it (if it is highlighted, it is enabled), then click OK

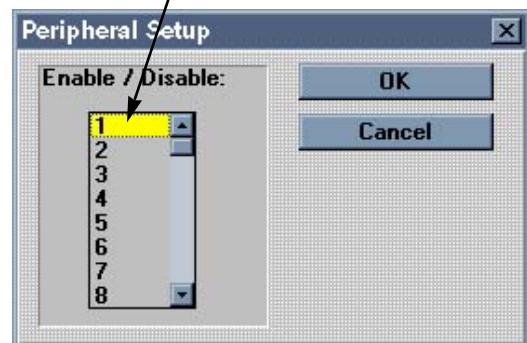


Figure 13-2

Sending Designs

Designs may be transferred to the peripheral(s) one of two ways.

Using Transfer

Click on Peripheral→Transfer to display the Transfer dialog box (Figure 13-3).

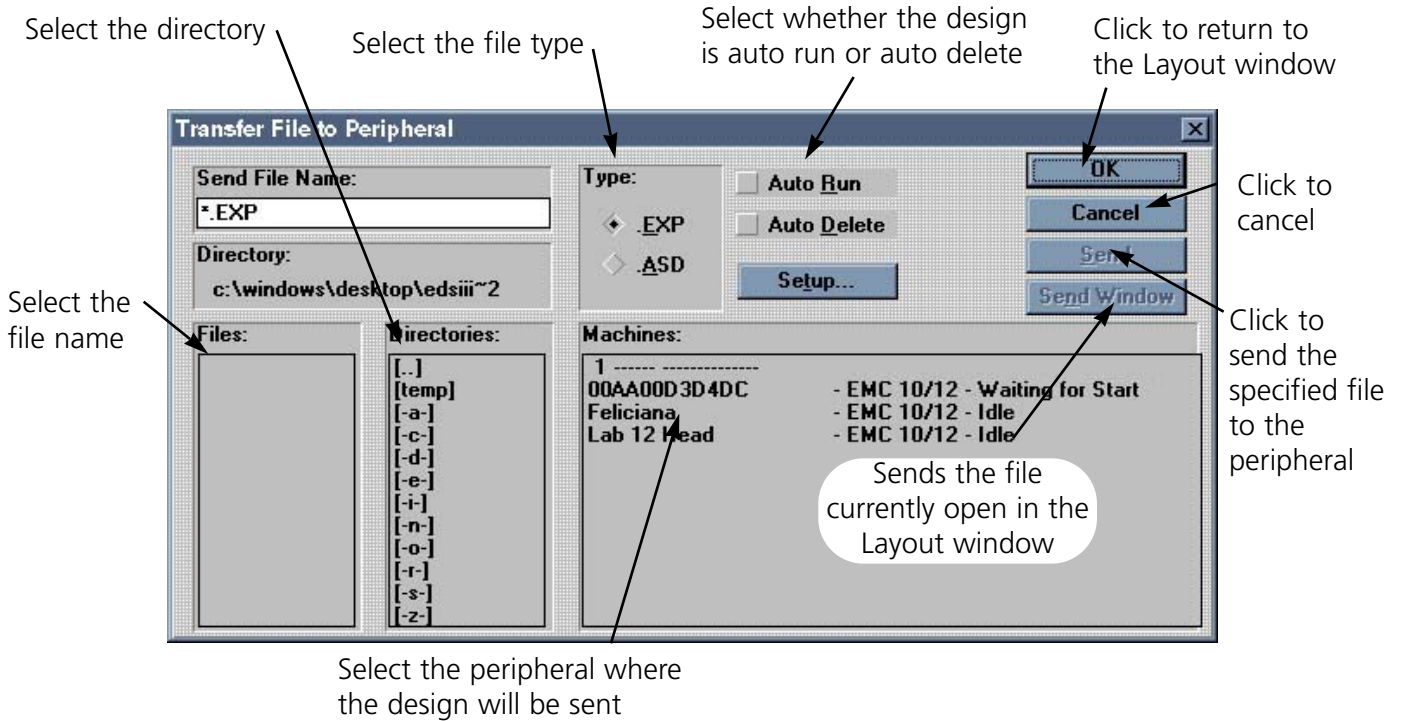
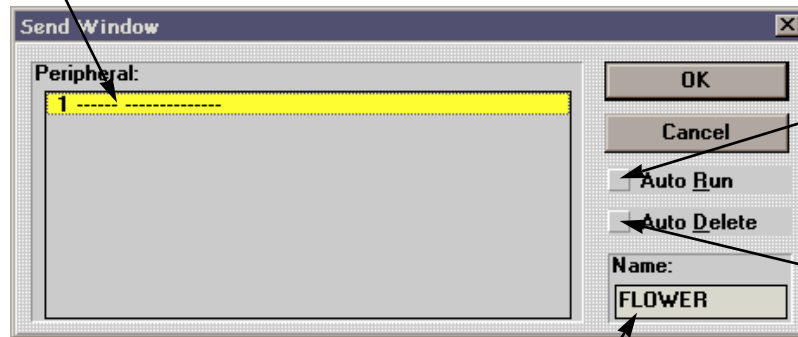


Figure 13-3

Using Send

Click on File→Send to display the Send dialog box (Figure 13-4).

Select the peripheral



Click here to automatically queue the design at the peripheral

Click here to have the design automatically deleted once it has sewn

A name will be selected for the file (as it will appear at the peripheral); to change the default name, type the new name here

Figure 13-4

Checking Peripheral Status

EDS III continuously polls each peripheral for statistical data. This data is available on the Machine Status screen. To access the information click on Peripheral→Status to display the Machine Status screen (Figure 13-5).

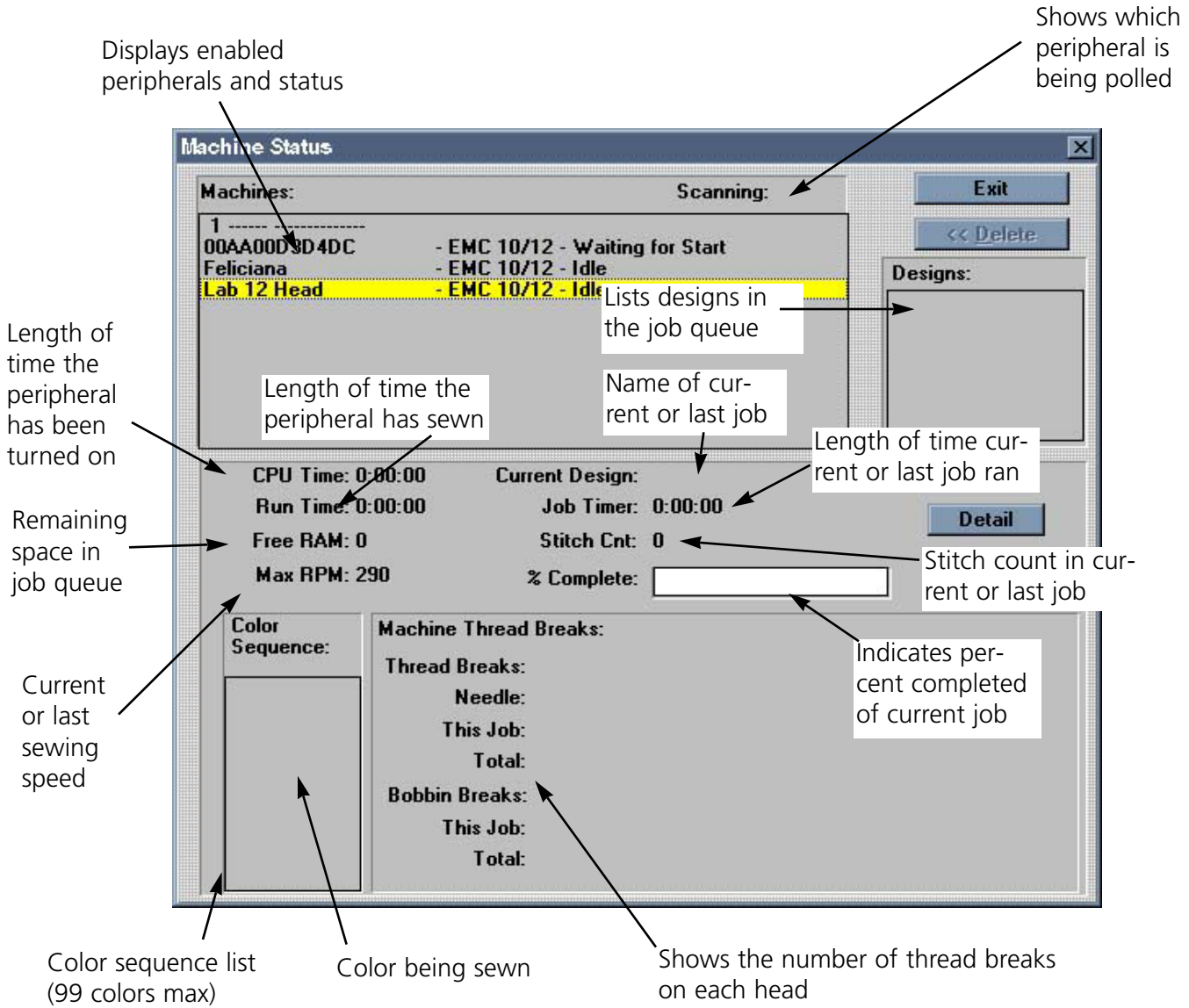


Figure 13-5

Detail

This option is available for peripherals designed to relay this information. It appears grayed out if it is not available. Click to display the Thread/Bobbin Breaks information screen (Figure 13-6). Thread Breaks: Displays the thread breaks on each needle.

Displays information for each needle

	H1	Total
N1	0	0
N2	0	0
N3	0	0
N4	0	0
N5	0	0
N6	0	0
N7	0	0
N8	0	0
N9	0	0
N10	0	0
Tot	0	0

Resets all counters to zero

Updates counters

Saves current counts to an ASCII text file

Exit

Toggles information displayed above to each different category

- Thread Breaks
- Bobbin Breaks
- Stitches (1000's)
- Stitches (1000's) per Break

by Job

by Day

Select counter (by day or by job)

Figure 13-6

Client/Server List

The Client/Server list is only applicable to users running an Ethernet network.

Click on Peripheral→Client/Server list to display a dialog box (Figure 13-7) showing all servers and peripherals (called clients) online. The dialog box is for informational purposes only. It displays each server and client's name, Ethernet address, and which Ethernet network it is on. Servers that are capable of downloading RSA files are marked with a * symbol. Click on the Update button to poll the networks for new information.

Client	Network ID	Address
00AA00D3D4DC	00000451	00AA00D3D4DC
Feliciana	00000450	00AA005C97CC
Lab 12 Head	00000451	00AA00D3D4D5

Server	Network ID	Address	RSA Download
Boceifus	00000450	00AA0033C7A0	
LabUnit:Win95	00000451	00AA0033C778	*
polobear	00000450	00AA003CE941	

Figure 13-7

14. Ending an EDS III Session

To close EDS III, use one of the following procedures to end your session before turning off the computer. Do not simply turn off the computer or you may create problems the next time you open EDS III. Refer to Figures 14-1 and 14-2 to end a session.

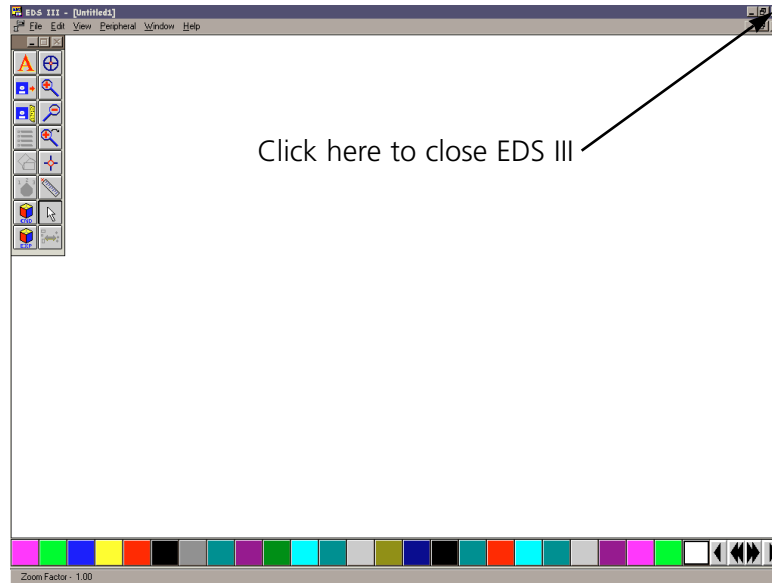


Figure 14-1

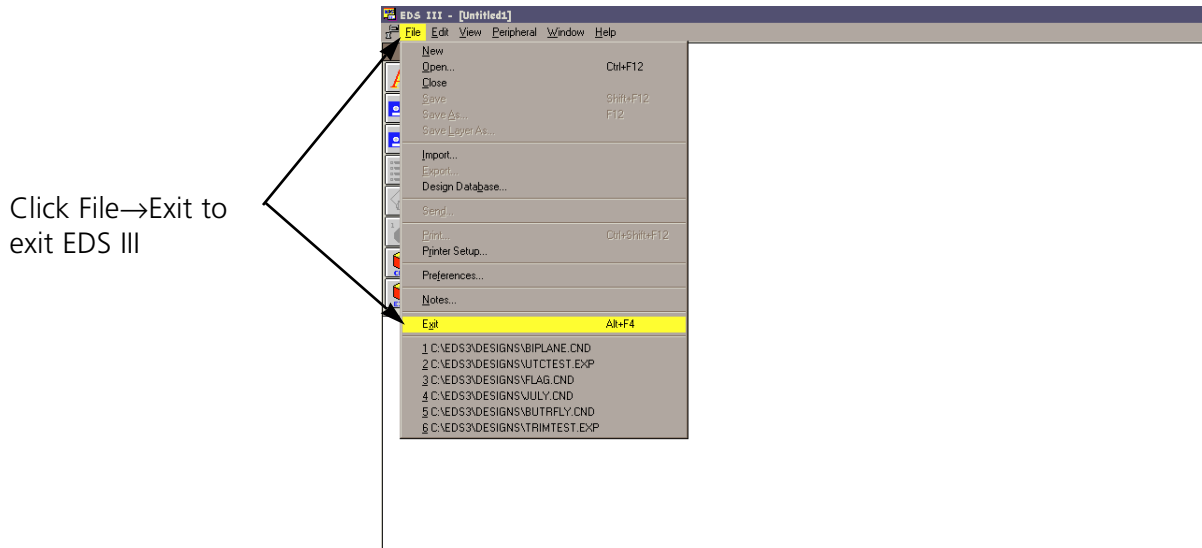


Figure 14-2

If you have unsaved information in any open designs, you will be prompted to save the design. Once EDS III has been properly closed, you may exit Windows and turn off the computer.

Appendix A. Glossary of Embroidery Terms

A

ACTIVE WINDOW

The window that you are currently using. Also called the current window.

ALPHABETS

Lettering styles that are ready to use for embroidery. Alphabets can also be designs that are brought to the screen using letters of the alphabet. An example of this would be Sports Symbols.

APPLICATION WINDOW

The first window to appear when EDS III is opened; screen says Melco in large letters across the middle of the screen. The Application Window has three menu bar items; File, Peripheral, and Help.

APPLIQUE

The art of using fabric shapes with satin stitch outlines to enhance a design or to reduce the stitch count.

ARTWORK

A design or cartoon used to digitize.

AUTO DELETE

An option that automatically deletes designs from the sewing peripheral after the design has sewn once. Machine will display Bad Design Name when the design finishes.

AUTO RUN

An option that automatically sends a design to the beginning of the job queue, allowing you to sew without making any selections from the peripheral menus.

AUTO TRIM

An option that automatically inserts a trim command between each letter of any alphabet (including scripts) used in a design.

ARC ANGLE

The center of lettering sewn on a circle. This position is given in degrees, 0° at the top of the circle, 180° at the bottom.

ARC FROM CENTER

When the position of the needle prior to sewing is at the center of the circle. The distance from the center of the circle to the bottom of the lettering is the radius. When traced, the trace includes the entire area.

ARC NORMAL

When the position of the needle prior to sewing is on the circumference of the circle. When traced, only the areas of the lettering is traced.

ASD

The file extension given by EDS III to a design that is sent to the peripheral.

B**BACKING**

Fabric used for stabilizing that is added to the back of a garment to be embroidered.

BEAN STITCH

A form of running stitch where the stitch is made forward, then back to the original needle penetration point, then forward again. Also known as a triple run.

BIRD NEST

A tangled mass of thread that gets jammed in the needle plate. Sometimes it is caused by improper tensions or densities.

BIT PAD

Another name for a Digitizing Tablet.

BLOCK

A designated group of stitches that can be scaled, rotated, repositioned, deleted, cut, copied and pasted.

BLOCK EDIT

The term used for changing a defined group of stitches.

BOBBIN

The reel or spool that holds the under thread of machine sewing. The under thread itself.

C**CENTER DESIGN**

Positioning the design in the center of the sewing field.

CHAIN STITCH

A stitch used to outline and detail a chenille design.

CHENILLE

A form of embroidery with a deep pile that uses heavy yarns and has no bobbin thread. Commonly used for high school letter jackets.

CLICK

Pressing and releasing a mouse button in one quick motion.

CLIPBOARD

A temporary storage area in the computer's memory. Data in the storage area can be copied to another place.

CND

The three letter extension given to a Condensed file. See Condensed Format for more information.

COLUMN FILL

An option to turn wide column or satin stitches into a series of shorter stitches. Commonly used to make alphabet letters 2.5" or larger more durable.

COLUMN STITCH

A stitch formed with one needle penetration on either side of a column. Also referred to as a satin stitch or a steil stitch.

COLUMN WIDTH

The width of the actual side-to-side needle penetrations in a column or satin stitch. In EDS III, the width can be increased or decreased in increments of 10% from 90% to -90%.

COMPLEX FILL

A method for digitizing fills where the computer automatically determines the various independent segments that are required in making the complete fill of an irregular shape.

CONDENSED FORMAT

A coding format that includes only the data for the Mk entries and function commands created during digitizing. This format allows you to scale the design up or down as well as change the density and stitch length of the design.

COPY

A command that keeps the design in the current window and also stores it in a temporary memory called the clipboard.

CURSOR

An icon used to indicate your position on the computer screen.

CUT

An editing function used to take selected stitching out of a design and store it in the clipboard. From there it may be pasted to a different place.

D**DATASET**

Any single line in the stitch list. An example would be any Mk point.

DEFAULTS

Values that are automatically used unless you override them with different values.

DENSITY

The space between needle penetrations, measured in points—not the number of stitches per inch.

DESIGN FILE

Any design stored on your hard disk or floppy disk. A file name can have up to eight letters, a period, and a three letter extension.

DIALOG BOX

A box displayed on your computer screen that prompts you to give information, such as a selection from a list of options, or a file name.

DIGITIZING

Converting artwork into a series of commands that can be read by an embroidery machine with the use of a special device.

DIGITIZING TABLET

A board used to communicate with a computer or an embroidery machine while creating a design.

DIGITRAC

The original Melco computerized digitizing system which uses an exceptionally large surface and its own vertical stand.

DIRECTORY

A named group of computer files stored on one of your computer drives. The hard drive of your computer is usually the C directory. Floppy diskettes are inserted into the A or B drive. The CD-ROM drive is usually the D drive.

DISK

A computer data storage device which is accessed in the hard drive or one of the floppy drives. The hard drive of your computer is usually the C drive. Floppy diskettes are the A or B drive. The CD-ROM drive is usually the D drive.

DISKETTE FORMAT

The manner in which a disk has been prepared to accept information.

DITHERED COLORS

A combination of a solid color and a pattern.

DOUBLE CLICK

Pressing the mouse button quickly two times.

DRAG

Holding down the mouse button while moving the mouse. This is usually done to move an object on the screen or to highlight text.

DROP-DOWN MENU

A list of available commands that displays when you click on a menu option. Commands displayed in black are accessible, commands that are displayed in gray or half tone are not.

E**EDIT**

Changing a design file by adding, deleting or moving Mk points, or by inserting and deleting functions.

EMBROIDERY POINT

A unit of measure equal to one tenth of a millimeter or 1/254th of an inch.

EXP

The three letter extension given to an Expanded file.

EXPANDED FORMAT

A coding format that includes the data for every stitch in the design.

EXPORT

Copying a design from the computer to a non-DOS format diskette or paper tape.

EXTENSIONS

The last part of a file name after the period. It can be up to three characters long and is used to identify the type of file.

F**FILE**

A collection of information, named and stored on a disk. Every piece of information on your computer's hard drive is stored in a file.

FILE NAME

The unique identifier given to a design that is stored on a computer. The file name can have up to eight characters, a period, and a three letter extension.

FILL STITCH

A series of running stitches used to cover large areas.

FORMAT

Preparing a disk to receive information. All new disks must be formatted, but reformatting a disk destroys any information stored on it. Your computer uses a DOS format, but you can format floppy disks to machine language formats.

FUNCTION

An action caused by a command in a design such as Trim, Color Change, Needle Up, etc.

G**GRAPHICAL ROTATION**

Angling a design in the Layout window using the mouse to click and drag the rotation box around the object.

GRAPHICAL SCALING

Making a design larger or smaller in the Layout window using the mouse in a click and drag motion.

GROUP OBJECTS

Objects that have been locked together on the screen.

H**HARD DISK**

A sealed disk in your computer with a read/write head and auxiliary memory. Usually the C drive.

HOOP

A device made of wood, metal, or plastic used to hold a garment or fabric taut during the embroidery process.

HORIZONTAL SPACING

Additional spacing that may be added between Alphabet letters.

I**ICON**

A small graphic image displayed on the screen that represents a file or an application.

IMPORT

Bringing a design file into the EDS III program from a non-DOS formatted diskette or paper tape.

INSERT

Adding additional information to an existing design.

J**JUMP STITCH**

A frame movement without a needle penetration. Its function allows you to make a stitch longer than the maximum stitch length of your machine.

L**LAYER BY COLOR**

Used to show specific colors of a design on the computer screen. Only works in the Object Edit Window.

LAYOUT WINDOW

The screen in which you can digitize designs, open files on the hard disk, import designs from floppy disks, export designs, modify designs, and create lettering.

LETTER WIDTH

Modifies the overall width of each letter, NOT the column width. In EDS III changes to letter width can be made in increments of 10% from +30% to -30%.

LINE CENTER BOTTOM

When lettering is centered horizontally and above the position of the needle prior to sewing. It will sew above $Y=0^\circ$ except for lower case letters such as **g, y, p, or q**; used to sew over a straight line on fabric such as a pocket.

LINE CENTER MIDDLE

When lettering is centered horizontally and vertically from the position of the needle prior to sewing.

LINE NORMAL

When the bottom left of the lettering is the needle position prior to sewing. The sewing will stop at the bottom right and will not return to the original position. It will sew above $Y=0^\circ$ and to the right of $X=0^\circ$ used to position design; used to align to the right of a vertical line such as a plaque.

LINE SPACING

Adding space between lines of lettering in the same text box. Line space is determined by adding the letter height to the amount of blank space you want between the lines.

LIST BOX

A box, usually with a scroll bar, that appears within a dialog box and displays available options.

LOAD FILL

Accessing a fill pattern for inspection or changes.

LOCK GROUP

One or more objects that have been joined together.

LOCK STITCH

Three or more stitches placed closely together to prevent the embroidered stitches from pulling out. Also known as a tie-off stitch.

M**MAXIMIZE**

The small button to the right of the Title Bar with the up arrow. Used to enlarge a window to its fullest extent.

MAXIMUM STITCH LENGTH

The longest stitch your embroidery machine is capable of sewing before performing a jump stitch. The maximum stitch length for Melco is 127 pts.

MINIMIZE

The small button on the right of the Title Bar with the down arrow. Used to reduce a window to an icon.

MODIFY Mk BUTTON

An option that changes the position of a Mk point or changes it to a different type of Mk. Double-clicking on a specific point in the stitch list opens the Modify Mk dialog box.

MOSS STITCH

The "loopy" part of a chenille design. The height of the loop is controlled by the height of the needle.

MULTIHEAD

An embroidery machine with more than one sewing head.

N**NEEDLE UP**

A command used to move from one part of a design to another without stitching.

NON-DOS FORMATS

Any disk format other than DOS that is supported by EDS III, such as: Melco, Tajima, Barudan, ZSK.

NORMAL STITCH

A command that resets the stitching to a regular running stitch. It also brings the needle down to the sewing position after a needle-up function is performed.

O**OBJECT**

Any design from a disk, paper tape, or lettering brought in to the Layout window. Several objects can be in one window at one time.

OBJECT FILE

A code format where each object has its own separate set of parameters. Condensed, expanded and lettering designs can all be saved together as an Object File.

OBJECT ORDER

A list showing the sewing order of a group of objects.

OBJECT PARAMETERS

A dialog box which allows you to change the scale, rotation, orientation, or lock status of an object.

OFM

The three letter extension that identifies an Object file.

ORIENTATION

The direction that a design will sew. Melco uses an "F" to designate a normal sewing position.

ORIGIN

The point at which a design will start. Most designs will have x and y coordinates of 0,0; meaning that the design will start in the center and end in the center.

P**PAPER TAPE**

An older form of computer information storage in which the information is stored as a series of holes on a reel-to-reel paper tape.

PARTITION LINE SEQUENCE

Determines where the needle will penetrate on each line of stitching in a fill stitch. Changing this sequence changes the texture of a fill.

PERIPHERAL

Any device that is attached to or run by the computer: Embroidery Machines, Paper Tape Punches, Digitizing Tablets, Printers, or Plotters.

PERIPHERAL SETUP

A dialog box that allows you to select Embroidery Peripherals in your network.

PERIPHERAL STATUS

A dialog box that displays information about a particular peripheral.

POINT EDIT WINDOW

One of the windows that is used to edit designs.

R**RADIUS**

The distance from the center to the circumference of a circle. The value of the radius controls the amount of curve in an arc.

REGENERATE

A command to redraw a design, used to see modifications in the current design.

RESET STITCH

See Normal Stitch.

RETURN TO ORIGIN

A command used to move the pantograph back to the origin of the design.

RUBBER BANDING

A command to view an edited portion of a design without regenerating the entire design.

RUNNING STITCH

A line of equally spaced stitches that are used to outline, underlay or add detail to a design.

S**SATIN STITCH**

A stitch formed with one needle penetration on either side of a column. Also called a column stitch or steil stitch.

SAVE

A command to overwrite a previously saved file without prompting you for a new filename.

SAVE AS

A command to store a design for the first time, or to store a modified design with a new name to prevent destruction of the original design.

SAVE FILL

A command to allow you to define fill information while digitizing.

SCALING

The process of changing the size, density or stitch lengths in a design.

SCROLL BAR

A bar that appears at the far right or bottom edge of a window or list box whose contents are not fully visible. Clicking on the arrows of the bar moves the viewing portion of the screen.

SEND DESIGN

Sends all items on the screen together under one design name. The design can be a condensed, expanded, or object file.

SHORT STITCHES

Computer generated stitches that do not go all the way across a column at a curve or angle to prevent an excess of stitches at one point cutting the fabric. Short Stitches defaults to ON, but may cause gaps in smaller letters and should be turned off in letters 0.5" or smaller.

SLANT ANGLE

A command that slants lettering in one degree increments up to fifteen degrees, positive or negative.

SPECIAL STITCH

A user defined stitch that is digitized and stored temporarily in the computer memory. A Special Stitch is limited to 30 Mks or commands.

STATUS BAR

The area at the bottom of the computer screen that displays information about the active window or selected command.

STITCH

One needle penetration made by the embroidery machine.

STITCH COUNT

The number of stitches in a design.

STITCH LENGTH

The length of the running stitches in a design. Measured in points.

STITCH LIST (condensed)

Information showing the Mk points and functions that make up a design.

STITCH LIST (expanded)

Information showing the actual stitches and functions that make up a design.

STITCH PROCESSOR

An EDS III option that changes the size, densities, or stitch lengths of an expanded design.

STORED SYMBOL

A portion of a design that is digitized as a separate piece to be used multiple times within the same design. An example of this would be leaves on a tree. You would digitize one leaf as a stored symbol then use that same leaf and place it on the tree at various different sizes and angles. This eliminates redigitizing the same design.

T**TIE OFF**

See Lock Stitch.

TILE

Allows you to put up to nine windows in the Application Window.

TOOL SET

The commands and options on the left side of the window represented by icons.

TRANSFER DESIGN

A command that sends Expanded or ASD files to the Peripheral.

U**UNDERLAY**

Stitches used to stabilize fabric and/or prepare the area for top stitching.

UTC

UTC is the Under Thread Control. It is a sensor mounted to the needle plate bracket that recognizes the absence of the bobbin thread. When the machine sews a certain number of stitches without bobbin thread, the UTC causes the machine to stop, back up that number of stitches, and display the error message, CHECK BOBBIN. The UTC also has a retaining tab that holds the inner basket of the rotary hook. The UTC arm must be set close enough to allow the thread to move it as stitches are made. Incorrect alignment of the UTC generates repeated **Check Bobbin** error messages.

V**VERTICAL SPACING**

A command that stair steps your lettering up (positive value), or down (negative value).

W**WINDOW**

A rectangular area on your screen in which you view and work on designs.

Z**ZOOM**

A command that enlarges or reduces a portion of a design in the current Layout window, allowing you to edit with more precision. This command does not affect the sewing size of the design. To view the design as the size it will be sewn, click View→Actual Size.

3 1/2 Floppy drive	2-1	Close.....	4-3
		Close All	4-7
Actual Size	4-6	Closest Point Lettering	5-11
Adjust parameters tool.....	4-8	Color Changes (F6)	5-8
Advanced Configuration Options	3-9	Color Palette	10-1
Angle	5-6	Column Fill.....	5-10
Application Window	4-2	Column Width	5-3
Arrange Icons.....	4-7	Computers	1-1
Auto Send Design Files.....	4-10	Condensed Files	4-9
Auto Trim.....	5-11	Configuring EDS III.....	3-8
		Copy.....	4-5, 7-4
Ballooned.....	5-13	Counterclockwise.....	5-6
Barudan FDR Format	11-5	CPU	2-1, 2-2
Barudan FMC Format	11-5	Create Design tool	4-8
Bilinear Stretch	5-14	Cut	4-5, 7-4
Bridging	5-12		
		Deleting an Object	7-7
Cascade	4-7	Density.....	5-2
CD-ROM drive.....	2-1	Design Cleanup.....	4-5
Center Design	4-5	Design Database	4-2, 4-4
Center Design tool.....	4-8	Design List.....	4-2, 4-4, 4-7
Centering Text.....	5-15	Design Notes.....	7-10
Clear.....	4-5, 7-4	Design Status.....	4-6, 7-10
Client/Server list.....	4-2, 4-7	Design, Status, and Notes	7-10
Clockwise.....	5-6	Designs	7-1

Designs as Objects	7-4	File	4-2
Diagnostic Test Files	iv	File Menu	4-3
Dialog box	2-5	File Name Standards.....	11-5
Digitize and Scan/Graphics	4-5	File Open by Name.....	7-3
Digitizing Tablet	2-3	File Open by Picture	7-3
Digitizing Tablets.....	iv	File Types.....	4-9
Directories.....	2-5	Fit Window	4-6
Disk Drives	2-2	Floppy Drives.....	2-2
Display Mode	4-6	Glossary of Embroidery Terms	A-1
DOS Format	11-5	Goto Dataset	4-5
Drop-down menu.....	2-5	Grid	4-6
Edit Menu	4-5	Hardware Configuration.....	3-9
Editing—Layout tool	4-9	Hardware Installation	3-2
EDS III Help	1-1	Help	4-2
EDS III Installation.....	3-5	Help Tags	4-9
EDS III online manuals	3-6	Import	4-2, 4-4, 11-1
EMC 10/12	3-10	Import Design tool	4-8
Enabling a StarLAN Peripheral	13-1	Importing a Design.....	11-1
Ending an EDS III Session.....	14-1	Installing the Dongle	3-3
Ethernet network options.....	3-10	Keyboard	2-1, 2-3
Exit	4-4, 4-2		
Expanded Files	4-9		
Export.....	4-4, 11-1		
Exporting a Design.....	11-4		

Layout Window.....	4-3	Object Sewing Order.....	7-7
Length	5-3	Open	4-3, 4-2
Letter Width.....	5-3	Open Design tool.....	4-8
Line Spacing.....	5-8	Opening Design Files.....	7-1
Line Type Options.....	5-4	Orientation of a Design	7-6
Lock Stitches	5-11		
		Palette.....	4-6
Melco Format.....	11-5	Palette Bar	10-1
Menu Bar	2-5	Pan	4-6
Modifying Condensed Designs	7-8	Pan tool	4-9
Monitor	2-1, 2-2	Paper Orientation.....	7-10
Monogram Alphabet.....	6-1	Paper Tape Reader.....	2-3
Monogramming	6-1	Paste.....	4-5, 7-4
Mouse	2-1, 2-3	Paths.....	2-6
Mouse Installation.....	3-4	Pennant Stretch.....	5-14
		Peripheral.....	4-2
New.....	4-3, 4-2	Peripheral Menu.....	4-7
Normal Cursor tool	4-9	Peripheral Status	13-4
Notes.....	4-4, 7-10	Pieces of the Computer System.....	2-1
		Preferences	4-2, 4-10, 4-4
Object Files	4-9	Premier/Stellar Format	11-6
Object List.....	7-10	Print.....	4-4, 7-10
Object List tool.....	4-8	Print Design	7-10
Object Order Dialog Box.....	7-7	Printer Setup.....	4-4
Object Parameters tool.....	4-8		

Radius	5-5	Stargate Board Installation	3-5
Redo	4-5	StarGate options	3-10
Regenerate.....	4-6	StarLAN network options	3-10
Return to Origin.....	4-5	Starting EDS III	4-1
Rotating Objects	7-5	Status	4-2, 4-7
Ruler tool	4-9	Status Bar	4-6
		Step and Repeat	4-5, 9-1
Save	4-3	Stitch List	4-6
Save As	4-4	Stitch Processor.....	8-3
Saving a Design.....	7-8	Styles	5-9
Saving Text Designs.....	5-15	Subdirectories	2-6
Scaling a Condensed Design	8-1	System Requirements	3-1
Scaling an Expanded Design.....	8-3		
Scaling Designs	8-1	Tajima Format	11-6
Scanners	iv	Tape Punches	iv
Search.....	4-5	Tape Reader/Punch Combo Units	iv
Send	4-4, 13-3	Tape readers.....	iv
Sending Designs.....	13-2	Text Dialog Box	5-1
Short Stitch	5-11	Text tool	4-8-5-1
Show Zoom Factor	4-6	Tile.....	4-7
Slant	5-4	Tool Bar.....	4-6
Slanting.....	5-14	Toolbar	2-5, 4-8
Spacing.....	5-7	Transfer	4-7, 4-2, 13-2
Specifications	iv	Trims (F9)	5-8
Squeezed	5-13		

Underlay	5-9
Undo.....	4-5
Update Alphabets	5-16
Update Alphas	5-16
Vertical Arc.....	5-13
Vertical Bridge.....	5-13
Vertical Spacing.....	5-8
View Menu	4-6
Window Menu.....	4-7
Windows	2-4
Zoom In	4-8, 4-6
Zoom Last.....	4-6, 4-9
Zoom Out.....	4-6, 4-8
ZSK Format	11-6

Stitch Density Chart

Points	Stitches Per Inch
2.4	105.8
2.6	97.6
3	84.6
3.4	74.7
3.6	70.5
4	63.5
4.4	57.7
4.6	55.2
5	50.8
5.4	47.0
5.6	45.4
6	42.3
6.4	39.6
6.6	38.5
7	36.3
7.4	34.3

Quick Reference Guide

for

EDS III

Melco 
Embroidery Systems

A Saurer Group Company

EDS III QUICK REFERENCE

Create Lettering

1. Click on File.
2. Click on New.
3. Click on the Text tool.
4. Type in Lettering.
5. Choose Alphabet and other Parameters.
6. Click on OK.



Adjust Lettering/Designs

1. Double click on the lettering.
2. Make necessary adjustments.
3. Click on OK.
OR
1. Click on the lettering; a box forms around it.
2. Click on Object Parameters tool.
3. Make adjustments to Rotate, Position, Trims After, Orientation, or Color Change After.
4. Click on OK.



Open a DOS File Design from a Disk

1. Click on File
2. Click on Open
3. Choose the directory, design, and the file type.
Examples A:boat.cnd A:boat.exp C:boat.ofm
4. Click on OK



Import a Non-DOS File

- Melco, Premier, Barudan, Tajima, ZSK or Unknown
1. Click on File
 2. Click on Import
 3. Select Format type
 4. Choose the Directory and select File name.
 5. Click on OK



Adjusting Designs/Lettering

1. Click on the design.
2. Click on the Adjust tool.
3. Make necessary adjustments.
4. Click on OK.



Centering the Design

1. Click on Edit.
2. Click on Center Design.
OR
1. Click on the Center Design tool



To Rotate, Move, Scale, Trim, Etc.

1. Click on the design, a box forms around it.
2. Click on the Object Parameters tool.
3. Make the adjustments.
4. Click on OK.



Create Multiple Designs

1. Bring a design on the screen.
2. Using the Text tool, Open File, or Import Design tool, load a second design on the screen.
3. Click and drag the design to move it to the right location.
4. Repeat steps 2 and 3 to add more designs.

Setup Sewout Order

1. Click on the Object List tool.
2. Click on the design you want to sew first.
3. Click on ↑ button until the design is first on the list.
4. Click on the design you want to sew second.
5. Click on ↑ or ↓ until the design is in the proper order.
6. Continue until the list of designs is in the order that you want.
7. Click on OK.



Saving Designs

1. Click on File.
2. Click on Save As.
3. Type in directory, design, and file type.
Examples A:boat.cnd C:boat.exp A:boat.ofm
4. Click on OK.

To View the Design Status Data

Size, Stitch Count, Etc.

1. Click on View.
2. Click on Design Status.

To Fit a Design Into the Window

1. Click on View.
2. Click on Fit Window.

To Display the Design Origin

1. Click on View.
2. Click on Display Mode.
3. Click on Design Origin.
4. Click on OK.

Using File Send

Note: Design must be on the screen

1. Click on File.
2. Click on Send.
3. Click on Machine choice.
4. Click on OK.

Transfer Designs to Peripherals

1. Click on Peripheral.
2. Click on Transfer.
3. Click on .ASD, .EXP, or .OFM file type.
4. Click on Machine choice.
5. Click on Directory choice.
6. Select one or more designs to send.
7. Click on Send.

Tiling Windows

A maximum of nine windows can be tiled.

1. Click on Window.
2. Click on Tile.
3. Click on the window you want to work with. The Title Bar will be highlighted.
4. Click on View.
5. Click on Fit Window.
6. Follow steps 3-5 for viewing the other windows.

To Close a Window

1. Click on File.
2. Click on Close.

To Close All Windows

1. Click on Window.
2. Click on Close All.